

Urinalysis: A Comprehensive Review

JEFF A. SIMERVILLE, M.D., WILLIAM C. MAXTED, M.D., and JOHN J. PAHIRA, M.D.
Georgetown University School of Medicine, Washington, D.C.

A complete urinalysis includes physical, chemical, and microscopic examinations. Midstream clean collection is acceptable in most situations, but the specimen should be examined within two hours of collection. Cloudy urine often is a result of precipitated phosphate crystals in alkaline urine, but pyuria also can be the cause. A strong odor may be the result of a concentrated specimen rather than a urinary tract infection. Dipstick urinalysis is convenient, but false-positive and false-negative results can occur. Specific gravity provides a reliable assessment of the patient's hydration status. Microhematuria has a range of causes, from benign to life threatening. Glomerular, renal, and urologic causes of microhematuria often can be differentiated by other elements of the urinalysis. Although transient proteinuria typically is a benign condition, persistent proteinuria requires further work-up. Uncomplicated urinary tract infections diagnosed by positive leukocyte esterase and nitrite tests can be treated without culture. (*Am Fam Physician* 2005;71:1153-62. Copyright© 2005 American Academy of Family Physicians.)

See page 1046 for strength-of-recommendation labels.

Urinalysis is invaluable in the diagnosis of urologic conditions such as calculi, urinary tract infection (UTI), and malignancy. It also can alert the physician to the presence of systemic disease affecting the kidneys. Although urinalysis is not recommended as a routine screening tool except in women who may be pregnant, physicians should know how to interpret urinalysis results correctly. This article reviews the correct method for performing urinalysis and the differential diagnosis for several abnormal results.

Specimen Collection

A midstream clean-catch technique usually is adequate in men and women. Although prior cleansing of the external genitalia often is recommended in women, it has no proven benefit. In fact, a recent study¹ found that contamination rates were similar in specimens obtained with and without prior cleansing (32 versus 29 percent). Urine must be refrigerated if it cannot be examined promptly; delays of more than two hours between collection and examination often cause unreliable results.²

Physical Properties: Color and Odor

Foods, medications, metabolic products, and infection can cause abnormal urine col-

ors (*Table 1*).³ Cloudy urine often is a result of precipitated phosphate crystals in alkaline urine, but pyuria also can be the cause.

The normal odor of urine is described as urinoid; this odor can be strong in concentrated specimens but does not imply infection. Diabetic ketoacidosis can cause urine to have a fruity or sweet odor, and alkaline fermentation can cause an ammoniacal odor after prolonged bladder retention. Persons with UTIs often have urine with a pungent odor. Other causes of abnormal odors include gastrointestinal-bladder fistulas (associated with a fecal smell), cystine decomposition (associated with a sulfuric smell), and medications and diet (e.g., asparagus).

Dipstick Urinalysis

False-positive and false-negative results are not unusual in dipstick urinalysis (*Table 2*). The accuracy of this test in detecting microscopic hematuria, significant proteinuria, and UTI is summarized in *Table 3*.⁴⁻¹³

SPECIFIC GRAVITY

Urinary specific gravity (USG) correlates with urine osmolality and gives important insight into the patient's hydration status. It also reflects the concentrating ability of the kidneys. Normal USG can range from 1.003 to 1.030; a value of less than 1.010 indicates relative hydration, and a value greater than

Strength of Recommendations

Key clinical recommendation	Label	References
Patients with dipstick results of 3+ or greater may have significant proteinuria; further work-up is indicated.	B	5
Patients with microscopic hematuria (i.e., at least three red blood cells per high-power field in two of three specimens) should be evaluated to exclude renal and urinary tract disease.	C	19, 20
Exercise-induced hematuria is a relatively common, self-limited, and benign condition. Because results of repeat urinalysis after 48 to 72 hours should be negative in patients with this condition, extended testing is not warranted.	C	30

A = consistent, good-quality patient-oriented evidence; B = inconsistent or limited-quality patient-oriented evidence; C = consensus, disease-oriented evidence, usual practice, opinion, or case series. See page 1046 for more information.

1.020 indicates relative dehydration.¹⁴ Increased USG is associated with glycosuria and the syndrome of inappropriate antidiuretic hormone; decreased USG is associated with diuretic use, diabetes insipidus, adrenal insufficiency, aldosteronism, and impaired renal function.¹⁴ In patients with intrinsic renal insufficiency, USG is fixed at 1.010—the specific gravity of the glomerular filtrate.

URINARY pH

Urinary pH can range from 4.5 to 8 but normally is slightly acidic (i.e., 5.5 to 6.5) because of metabolic activity. Ingestion of proteins and acidic fruits (e.g., cranberries) can cause acidic urine, and diets high in citrate can

cause alkaline urine.¹⁵⁻¹⁷ Urinary pH generally reflects the serum pH, except in patients with renal tubular acidosis (RTA). The inability to acidify urine to a pH of less than 5.5 despite an overnight fast and administration of an acid load is the hallmark of RTA. In type I (distal) RTA, the serum is acidic but the urine is alkaline, secondary to an inability to secrete protons into the urine. Type II (proximal) RTA is characterized by an inability to reabsorb bicarbonate. This situation initially results in alkaline urine, but as the filtered load of bicarbonate decreases, the urine becomes more acidic.

Determination of urinary pH is useful in the diagnosis and management of UTIs and calculi. Alkaline

TABLE 1
Common Causes of Abnormal Urine Coloration

Color	Pathologic causes	Food and drug causes
Cloudy	Phosphaturia, pyuria, chyluria, lipiduria, hyperoxaluria	Diet high in purine-rich foods (hyperuricosuria)
Brown	Bile pigments, myoglobin	Fava beans Levodopa (Larodopa), metronidazole (Flagyl), nitrofurantoin (Furadantin), some antimalarial agents
Brownish-black	Bile pigments, melanin, methemoglobin	Cascara, levodopa, methylodopa (Aldomet), senna
Green or blue	Pseudomonas UTI, biliverdin	Amitriptyline (Elavil), indigo carmine, IV cimetidine (Tagamet), IV promethazine (Phenergan), methylene blue, triamterene (Dyrenium)
Orange	Bile pigments	Phenothiazines, phenazopyridine (Pyridium)
Red	Hematuria, hemoglobinuria, myoglobinuria, porphyria	Beets, blackberries, rhubarb Phenolphthalein, rifampin (Rifadin)
Yellow	Concentrated urine	Carrots Cascara

UTI = urinary tract infection; IV = intravenous.

Adapted with permission from Hanno PM, Wein AJ, Malkowicz SB. *Clinical manual of urology*. 3d ed. New York: McGraw-Hill, 2001:75.

TABLE 2
Causes of False-Positive and False-Negative Urinalysis Results

<i>Dipstick test</i>	<i>False positive</i>	<i>False negative</i>
Bilirubin	Phenazopyridine (Pyridium)	Chlorpromazine (Thorazine), selenium
Blood	Dehydration, exercise, hemoglobinuria, menstrual blood, myoglobinuria	Captopril (Capoten), elevated specific gravity, pH < 5.1, proteinuria, vitamin C
Glucose	Ketones, levodopa (Larodopa)	Elevated specific gravity, uric acid, vitamin C
Ketones	Acidic urine, elevated specific gravity, mesna (Mesnex), phenolphthalein, some drug metabolites (e.g., levodopa)	Delay in examination of urine
Leukocyte esterase	Contamination	Elevated specific gravity, glycosuria, ketonuria, proteinuria, some oxidizing drugs (cephalexin [Keflex], nitrofurantoin [Furadantin], tetracycline, gentamicin), vitamin C
Nitrites	Contamination, exposure of dipstick to air, phenazopyridine	Elevated specific gravity, elevated urobilinogen levels, nitrate reductase-negative bacteria, pH < 6.0, vitamin C
Protein	Alkaline or concentrated urine, phenazopyridine, quaternary ammonia compounds	Acidic or dilute urine, primary protein is not albumin
Specific gravity*	Dextran solutions, IV radiopaque dyes, proteinuria	Alkaline urine
Urobilinogen	Elevated nitrite levels, phenazopyridine	—

IV = intravenous.

*—False-positive results are caused by false elevation; false-negative results are caused by false depression.

TABLE 3
Accuracy of Urinalysis for Disease Detection

<i>Condition</i>	<i>Test</i>	<i>Results</i>	<i>Sensitivity (%)</i>	<i>Specificity (%)</i>	<i>PPV</i>	<i>NPV</i>
Microscopic hematuria ⁴	Dipstick	≥ 1+ blood	91 to 100	65 to 99	NA	NA
Significant proteinuria ⁵	Dipstick	≥ 3+ protein	96	87	NA	NA
Culture-confirmed UTI ⁶⁻¹³	Dipstick	Abnormal leukocyte esterase	72 to 97	41 to 86	43 to 56	82 to 91
		Abnormal nitrites	19 to 48	92 to 100	50 to 83	70 to 88
		Abnormal leukocyte esterase or nitrites	46 to 100	42 to 98	52 to 68	78 to 98
		≥ 3+ protein	63 to 83	50 to 53	53	82
		≥ 1+ blood	68 to 92	42 to 46	51	88
		Any of the above abnormalities	94 to 100	14 to 26	44	100
		Microscopy	> 5 WBCs per HPF	90 to 96	47 to 50	56 to 59
	> 5 RBCs per HPF	18 to 44	88 to 89	27	82	
		Bacteria (any amount)	46 to 58	89 to 94	54 to 88	77 to 86

PPV = positive predictive value; NPV = negative predictive value; NA = not applicable; UTI = urinary tract infection; WBCs = white blood cells; HPF = high-powered field; RBCs = red blood cells.

Information from references 4 through 13.

TABLE 4

Common Causes of Hematuria

Glomerular causes	Renal causes	Urologic causes
Familial causes	Arteriovenous malformation	Benign prostatic hyperplasia
Fabry's disease	Hypercalciuria	Cancer (kidney, ureteral, bladder, prostate, and urethral)
Hereditary nephritis (Alport's syndrome)	Hyperuricosuria	Cystitis/pyelonephritis
Nail-patella syndrome	Loin pain-hematuria syndrome	Nephrolithiasis
Thin basement-membrane disease	Malignant hypertension	Prostatitis
Primary glomerulonephritis	Medullary sponge kidney	<i>Schistosoma haematobium</i> infection
Focal segmental glomerulonephritis	Metabolic causes	Tuberculosis
Goodpasture's disease	Papillary necrosis	Other causes
Henoch-Schönlein purpura	Polycystic kidney disease	Drugs (e.g., NSAIDs, heparin, warfarin [Coumadin], cyclophosphamide [Cytosan])
IgA nephropathy (Berger's disease)	Renal artery embolism	Trauma (e.g., contact sports, running, Foley catheter)
Mesangioproliferative glomerulonephritis	Renal vein thrombosis	
Postinfectious glomerulonephritis	Sickle cell disease or trait	
Rapidly progressive glomerulonephritis	Tubulointerstitial causes	
Secondary glomerulonephritis	Vascular cause	
Hemolytic-uremic syndrome		
Systemic lupus nephritis		
Thrombotic thrombocytopenic purpura		
Vasculitis		

NSAIDs = nonsteroidal anti-inflammatory drugs.

Adapted with permission from Ahmed Z, Lee J. Asymptomatic urinary abnormalities. Hematuria and proteinuria. *Med Clin North Am* 1997;81:644.

urine in a patient with a UTI suggests the presence of a urea-splitting organism, which may be associated with magnesium-ammonium phosphate crystals and can form staghorn calculi. Uric acid calculi are associated with acidic urine.

HEMATURIA

According to the American Urological Association, the presence of three or more red blood cells (RBCs) per high-powered field (HPF) in two of three urine samples is the generally accepted definition of hematuria.¹⁸⁻²⁰ The dipstick test for blood detects the peroxidase activity of erythrocytes. However, myoglobin and hemoglobin also will catalyze this reaction, so a positive test result may indicate hematuria, myoglobinuria, or hemoglobinuria. Visualization of intact erythrocytes on microscopic examination of the urinary sediment can distinguish hematuria from other conditions. Microscopic examination also may detect RBC casts or dysmorphic RBCs. Hematuria is divided into glomerular, renal (i.e., nonglomerular), and urologic etiologies (Table 4).²¹

Glomerular Hematuria. Glomerular hematuria typically is associated with significant proteinuria, erythro-

cyte casts, and dysmorphic RBCs. However, 20 percent of patients with biopsy-proven glomerulonephritis present with hematuria alone.²² IgA nephropathy (i.e., Berger's disease) is the most common cause of glomerular hematuria.

Renal (Nonglomerular) Hematuria. Nonglomerular hematuria is secondary to tubulointerstitial, renovascular, or metabolic disorders. Like glomerular hematuria, it often is associated with significant proteinuria; however, there are no associated dysmorphic RBCs or erythrocyte casts. Further evaluation of patients with glomerular and nonglomerular hematuria should include determination of renal function and 24-hour urinary protein or spot urinary protein-creatinine ratio.

Urologic Hematuria. Urologic causes of hematuria include tumors, calculi, and infections. Urologic hematuria is distinguished from other etiologies by the absence of proteinuria, dysmorphic RBCs, and erythrocyte casts. Even significant hematuria will not elevate the protein concentration to the 2+ to 3+ range on the dipstick test.²³ Up to 20 percent of patients with gross hematuria have urinary tract malignancy; a full work-up with cystoscopy and upper-tract imaging is indicated in patients with this

TABLE 5
Common Causes of Proteinuria

Transient proteinuria	Secondary glomerular causes	Tubular causes
Congestive heart failure	Alport's syndrome	Aminoaciduria
Dehydration	Amyloidosis	Drugs (e.g., NSAIDs, antibiotics)
Emotional stress	Collagen vascular diseases (e.g., systemic lupus erythematosus)	Fanconi syndrome
Exercise	Diabetes mellitus	Heavy metal ingestion
Fever	Drugs (e.g., NSAIDs, penicillamine [Cuprimine], gold, ACE inhibitors)	Hypertensive nephrosclerosis
Orthostatic (postural) proteinuria	Fabry's disease	Interstitial nephritis
Seizures	Infections (e.g., HIV, syphilis, hepatitis, post-streptococcal infection)	Overflow causes
Persistent proteinuria	Malignancies (e.g., lymphoma, solid tumors)	Hemoglobinuria
Primary glomerular causes	Sarcoidosis	Multiple myeloma
Focal segmental glomerulonephritis	Sickle cell disease	Myoglobinuria
IgA nephropathy (i.e., Berger's disease)		
IgM nephropathy		
Membranoproliferative glomerulonephritis		
Membranous nephropathy		
Minimal change disease		

NSAIDs = nonsteroidal anti-inflammatory drugs; ACE = angiotensin-converting enzyme; HIV = human immunodeficiency virus.

Adapted with permission from Ahmed Z, Lee J. Asymptomatic urinary abnormalities. Hematuria and proteinuria. *Med Clin North Am* 1997;81:650.

condition.²⁴ In patients with asymptomatic microscopic hematuria (without proteinuria or pyuria), 5 to 22 percent have serious urologic disease, and 0.5 to 5 percent have a genitourinary malignancy.²⁵⁻²⁹

Exercise-induced hematuria is a relatively common, benign condition that often is associated with long-distance running. Results of repeat urinalysis after 48 to 72 hours should be negative in patients with this condition.³⁰

PROTEINURIA

In healthy persons, the glomerular capillary wall is permeable only to substances with a molecular weight of less than 20,000 Daltons. Once filtered, low-molecular-weight proteins are reabsorbed and metabolized by the proximal tubule cells. Normal urinary proteins include albumin, serum globulins, and proteins secreted by the nephron. Proteinuria is defined as urinary protein excretion of more than 150 mg per day (10 to 20 mg per dL) and is the hallmark of renal disease. Microalbuminuria is defined as the excretion of 30 to 150 mg of protein per day and is a sign of early renal disease, particularly in diabetic patients.

The reagent on most dipstick tests is sensitive to albumin but may not detect low concentrations of γ -globulins and Bence Jones proteins. Dipstick tests for trace

amounts of protein yield positive results at concentrations of 5 to 10 mg per dL—lower than the threshold for clinically significant proteinuria.¹⁵ A result of 1+ corresponds to approximately 30 mg of protein per dL and is considered positive; 2+ corresponds to 100 mg per dL, 3+ to 300 mg per dL, and 4+ to 1,000 mg per dL.^{31,32} Dipstick urinalysis reliably can predict albuminuria with sensitivities and specificities of greater than 99 percent.⁴ Asymptomatic proteinuria is associated with significant renal disease in less than 1.5 percent of patients.^{4,33}

Proteinuria can be classified as transient or persistent (Table 5).²¹ In transient proteinuria, a temporary change in glomerular hemodynamics causes the protein excess; these conditions follow a benign, self-limited course.^{34,35} Orthostatic (postural) proteinuria is a benign condition that can result from prolonged standing; it is confirmed by obtaining a negative urinalysis result after eight hours of recumbency.

Persistent proteinuria is divided into three general categories: glomerular, tubular, and overflow. In glomerular proteinuria, the most common type, albumin is the primary urinary protein. Tubular proteinuria results when malfunctioning tubule cells no longer metabolize or reabsorb normally filtered protein. In this condition, low-molecular-weight proteins predominate over albumin and rarely exceed 2 g per day. In overflow pro-

teinuria, low-molecular-weight proteins overwhelm the ability of the tubules to reabsorb filtered proteins.

Further evaluation of persistent proteinuria usually includes determination of 24-hour urinary protein excretion or spot urinary protein-creatinine ratio, microscopic examination of the urinary sediment, urinary protein electrophoresis, and assessment of renal function.³²

GLYCOSURIA

Glucose normally is filtered by the glomerulus, but it is almost completely reabsorbed in the proximal tubule. Glycosuria occurs when the filtered load of glucose exceeds the ability of the tubule to reabsorb it (i.e., 180 to 200 mg per dL). Etiologies include diabetes mellitus, Cushing's syndrome, liver and pancreatic disease, and Fanconi's syndrome.

KETONURIA

Ketones, products of body fat metabolism, normally are not found in urine. Dipstick reagents detect acetic acid through a reaction with sodium nitroprusside or nitro-ferricyanide and glycine. Ketonuria most commonly is associated with uncontrolled diabetes, but it also can occur during pregnancy, carbohydrate-free diets, and starvation.

NITRITES

Nitrites normally are not found in urine but result when bacteria reduce urinary nitrates to nitrites. Many gram-negative and some gram-positive organisms are capable of this conversion, and a positive dipstick nitrite test indicates that these organisms are present in significant numbers (i.e., more than 10,000 per mL). This test is specific but

not highly sensitive. Thus, a positive result is helpful, but a negative result does not rule out UTI.⁶ The nitrite dipstick reagent is sensitive to air exposure, so containers should be closed immediately after removing a strip. After one week of exposure, one third of strips give false-positive results, and after two weeks, three fourths give false-positive results.³⁶ Non-nitrate-reducing organisms also may cause false-negative results, and patients who consume a low-nitrate diet may have false-negative results.

LEUKOCYTE ESTERASE

Leukocyte esterase is produced by neutrophils and may signal pyuria associated with UTI. To detect significant pyuria accurately, five minutes should be allowed for the dipstick reagent strip to change color. Leukocyte casts in the urinary sediment can help localize the area of inflammation to the kidney.

Organisms such as *Chlamydia* and *Ureaplasma urealyticum* should be considered in patients with pyuria and negative cultures. Other causes of sterile pyuria include balanitis, urethritis, tuberculosis, bladder tumors, viral infections, nephrolithiasis, foreign bodies, exercise, glomerulonephritis, and corticosteroid and cyclophosphamide (Cytoxan) use.

BILIRUBIN AND UROBILINOGEN

Urine normally does not contain detectable amounts of bilirubin. Unconjugated bilirubin is water insoluble and cannot pass through the glomerulus; conjugated bilirubin is water soluble and indicates further evaluation for liver dysfunction and biliary obstruction when it is detected in the urine.

Normal urine contains only small amounts of urobilinogen, the end product of conjugated bilirubin after it has passed through the bile ducts and been metabolized in the intestine. Urobilinogen is reabsorbed into the portal circulation, and a small amount eventually is filtered by the glomerulus. Hemolysis and hepatocellular disease can elevate urobilinogen levels, and antibiotic use and bile duct obstruction can decrease urobilinogen levels.

Microscopic Urinalysis

Microscopic examination is an indispensable part of urinalysis; the identification of casts, cells, crystals, and bacteria aids in the diagnosis of a variety of conditions. To prepare a urine specimen for microscopic analysis, a fresh sample of 10 to 15 mL of urine should be centrifuged at 1,500 to 3,000 rpm for five minutes. The supernatant then is decanted and the sediment resuspended in the remaining liquid.³⁷ A single drop is transferred to a clean glass slide, and a cover slip is applied.

The Authors

JEFF A. SIMERVILLE, M.D., is a fifth-year resident in urology at Georgetown University Medical Center, Washington, D.C. He received his medical degree from Georgetown University School of Medicine.

WILLIAM C. MAXTED, M.D., is professor of urology at Georgetown University School of Medicine, where he received his medical degree and completed a residency in urology.

JOHN J. PAHIRA, M.D., is professor of urology at Georgetown University School of Medicine. He received his medical degree from Pennsylvania State University Milton S. Hershey Medical Center College of Medicine, Hershey, and a residency in urology at the Hospital of the University of Pennsylvania, Philadelphia.

Address correspondence to Jeff A. Simerville, M.D., 6641 Wakefield Dr., #411, Alexandria, VA 22307 (e-mail: jsimerville@cox.net). Reprints are not available from the authors.

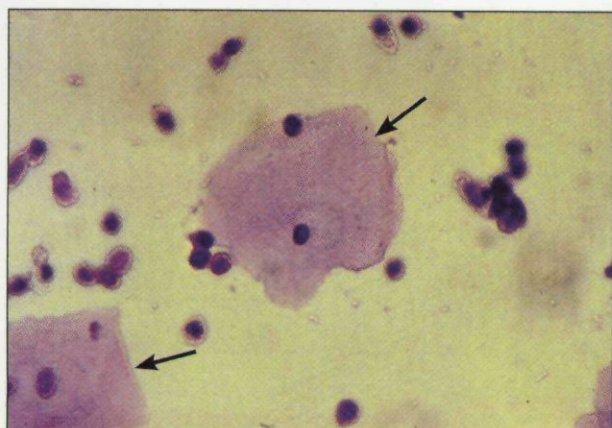


Figure 1. Squamous epithelial cells (*arrows*) and leukocytes (200 X).

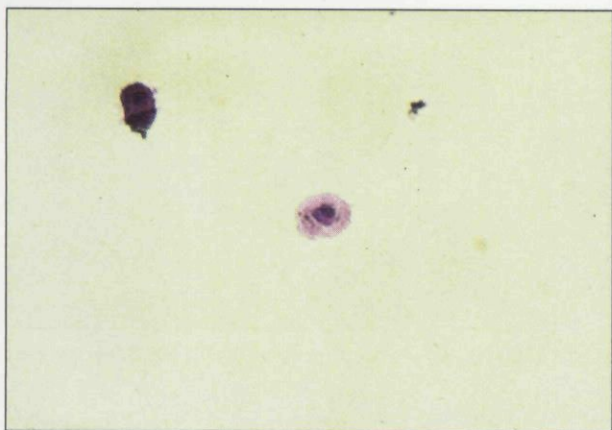


Figure 2. Convoluted renal tubule cells (200 X).

CELLS

Leukocytes may be seen under low- and high-power magnification (*Figure 1*). Men normally have fewer than two white blood cells (WBCs) per HPF; women normally have fewer than five WBCs per HPF.

Epithelial cells often are present in the urinary sediment. Squamous epithelial cells are large and irregularly shaped, with a small nucleus and fine granular cytoplasm; their presence suggests contamination. The presence of transitional epithelial cells is normal. These cells are smaller and rounder than squamous cells, and they have larger nuclei. The presence of renal tubule cells indicates significant renal pathology (*Figure 2*). Erythrocytes are best visualized under high-power magnification. Dysmorphic erythrocytes, which have odd shapes because of their passage through an abnormal glomerulus, suggest glomerular disease.

TABLE 6

Urinary Casts and Associated Pathologic Conditions

Type of cast	Composition	Associated conditions
Hyaline	Mucoproteins	Pyelonephritis, chronic renal disease May be a normal finding
Erythrocyte	Red blood cells	Glomerulonephritis May be a normal finding in patients who play contact sports
Leukocyte	White blood cells	Pyelonephritis, glomerulonephritis, interstitial nephritis, renal inflammatory processes
Epithelial	Renal tubule cells	Acute tubular necrosis, interstitial nephritis, eclampsia, nephritic syndrome, allograft rejection, heavy metal ingestion, renal disease
Granular	Various cell types	Advanced renal disease
Waxy	Various cell types	Advanced renal disease
Fatty	Lipid-laden renal tubule cells	Nephrotic syndrome, renal disease, hypothyroidism
Broad	Various cell types	End-stage renal disease

Information from reference 38.

CASTS

Casts in the urinary sediment may be used to localize disease to a specific location in the genitourinary tract (*Table 6*).³⁸ Casts, which are a coagulum of Tamm-Horsfall mucoprotein and the trapped contents of tubule lumen, originate from the distal convoluted tubule or collecting duct during periods of urinary concentration or stasis, or when urinary pH is very low. Their cylindrical shape reflects the tubule in which they were formed and is retained when the casts are washed away. The predominant cellular elements determine the type of cast: hyaline, erythrocyte, leukocyte, epithelial, granular, waxy, fatty, or broad (*Figure 3*).

CRYSTALS

Crystals may be seen in the urinary sediment of healthy patients (*Figure 4*). Calcium oxalate crystals have a refractile square “envelope” shape that can vary in size.

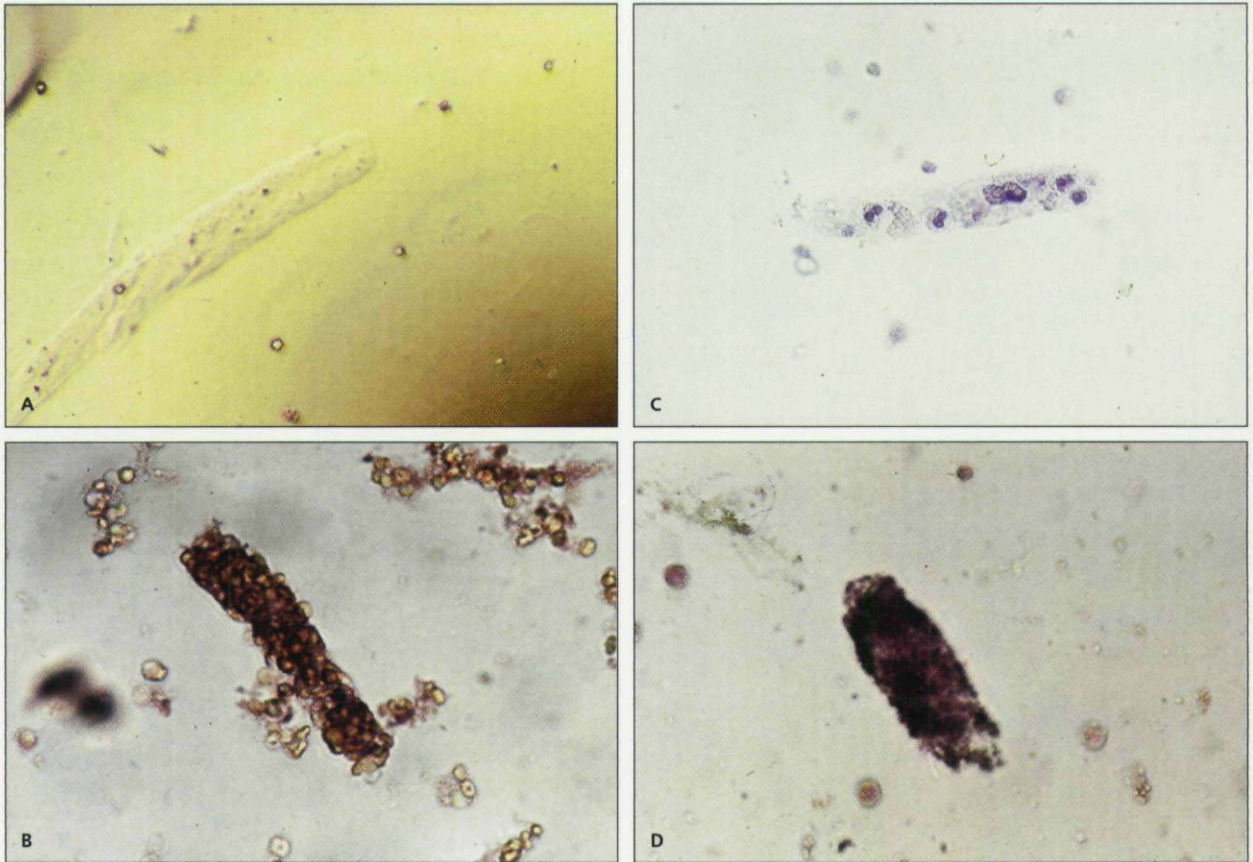


Figure 3. Urinary casts. (A) Hyaline cast (200 X); (B) erythrocyte cast (100 X); (C) leukocyte cast (100 X); (D) granular cast (100 X).

Uric acid crystals are yellow to orange-brown and may be diamond- or barrel-shaped. Triple phosphate crystals may be normal but often are associated with alkaline urine and UTI (typically associated with *Proteus* species). These crystals are colorless and have a characteristic “coffin lid” appearance. Cystine crystals are colorless, have a hexagonal shape, and are present in acidic urine, which is diagnostic of cystinuria.

BACTERIURIA

Gram-negative streptococci and staphylococci can be distinguished by their characteristic appearance under high-powered magnification.

Gram staining can help guide antibiotic therapy, but it is not indicated in routine outpatient practice. Clean-catch specimens from female patients frequently are contaminated by vaginal flora. In these patients, five bacteria per HPF represents roughly 100,000 colony-forming units (CFU) per mL, the classic diagnostic criterion for asymptomatic bacteriuria and certainly compatible with a UTI. In symptomatic patients, a col-

ony count as low as 100 CFU per mL suggests UTI, and antibiotics should be considered. The presence of bacteria in a properly collected male urine specimen is suggestive of infection, and a culture should be obtained.

The authors indicate that they do not have any conflicts of interest. Sources of funding: none reported.

Figures 1 through 4 reprinted from the National Institutes of Health Clinical Center Department of Laboratory Medicine, Bethesda, Md.

REFERENCES

1. Lifshitz E, Kramer L. Outpatient urine culture: does collection technique matter? *Arch Intern Med* 2000;160:2537-40.
2. Rabinovitch A. Urinalysis and collection, transportation, and preservation of urine specimens: approved guideline. 2d ed. Wayne, Pa.: National Committee for Clinical Laboratory Standards, 2001. NCCLS document GP16-A2.
3. Hanno PM, Wein AJ, Malkowicz SB. *Clinical manual of urology*. 3d ed. New York: McGraw-Hill, 2001.
4. Woolhandler S, Pels RJ, Bor DH, Himmelstein DU, Lawrence RS. Dipstick urinalysis screening of asymptomatic adults for urinary tract disorders. I. Hematuria and proteinuria. *JAMA* 1989;262:1214-9.
5. Agarwal R, Panesar A, Lewis RR. Dipstick proteinuria: can it guide hypertension management? *Am J Kidney Dis* 2002;39:1190-5.

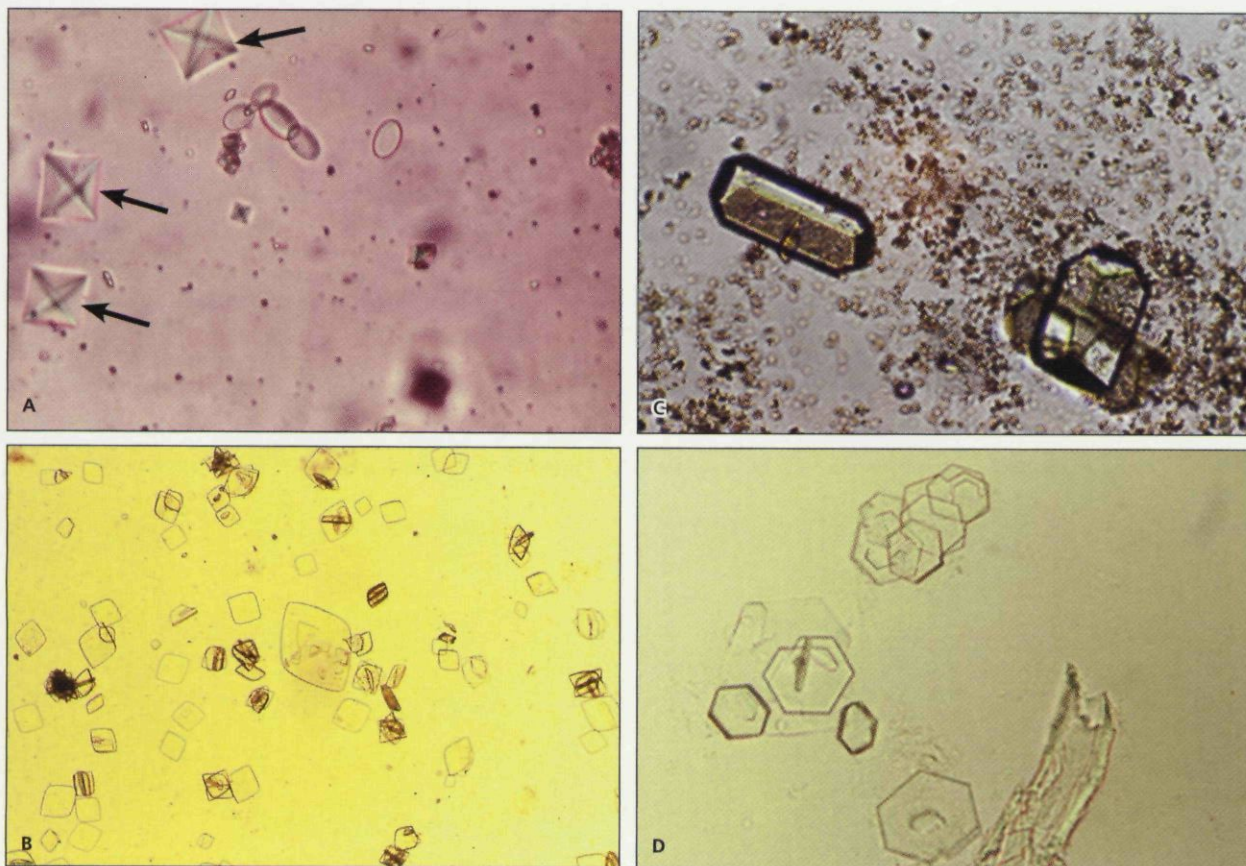


Figure 4. Urinary crystals. (A) Calcium oxalate crystals (arrows; 100 X); (B) uric acid crystals (100 X); (C) triple phosphate crystals with amorphous phosphates (400 X); (D) cystine crystals (100 X).

- Pels RJ, Bor DH, Woolhandler S, Himmelstein DU, Lawrence RS. Dipstick urinalysis screening of asymptomatic adults for urinary tract disorders. II. Bacteriuria. *JAMA* 1989;262:1221-4.
- Sultana RV, Zalstein S, Cameron P, Campbell D. Dipstick urinalysis and the accuracy of the clinical diagnosis of urinary tract infection. *J Emerg Med* 2001;20:13-9.
- Smith P, Morris A, Reller LB. Predicting urine culture results by dipstick testing and phase contrast microscopy. *Pathology* 2003;35:161-5.
- Van Nostrand JD, Junkins AD, Bartholdi RK. Poor predictive ability of urinalysis and microscopic examination to detect urinary tract infection. *Am J Clin Pathol* 2000;113:709-13.
- Eidelman Y, Raveh D, Yinnon AM, Ballin J, Rudensky B, Gottehrer NP. Reagent strip diagnosis of UTI in a high-risk population. *Am J Emerg Med* 2002;20:112-3.
- Lammers RL, Gibson S, Kovacs D, Sears W, Strachan G. Comparison of test characteristics of urine dipstick and urinalysis at various test cutoff points. *Ann Emerg Med* 2001;38:505-12.
- Semeniuk H, Church D. Evaluation of the leukocyte esterase and nitrite urine dipstick screening tests for detection of bacteriuria in women with suspected uncomplicated urinary tract infections. *J Clin Microbiol* 1999;37:3051-2.
- Leman P. Validity of urinalysis and microscopy for detecting urinary tract infection in the emergency department. *Eur J Emerg Med* 2002;9:141-7.
- Kavouras SA. Assessing hydration status. *Curr Opin Clin Nutr Metab Care* 2002;5:519-24.
- Sheets C, Lyman JL. Urinalysis. *Emerg Med Clin North Am* 1986;4: 263-80.
- Kiel DP, Moskowitz MA. The urinalysis: a critical appraisal. *Med Clin North Am* 1987;71:607-24.
- Benejam R, Narayana AS. Urinalysis: the physician's responsibility. *Am Fam Physician* 1985;31:103-11.
- Mariani AJ, Mariani MC, Macchioni C, Stams UK, Hariharan A, Moriera A. The significance of adult hematuria: 1,000 hematuria evaluations including a risk-benefit and cost-effectiveness analysis. *J Urol* 1989;141:350-5.
- Grossfeld GD, Litwin MS, Wolf JS, Hricak H, Shuler CL, Agerter DC, et al. Evaluation of asymptomatic microscopic hematuria in adults: the American Urological Association best practice policy—part I: definition, detection, prevalence, and etiology. *Urology* 2001;57:599-603.
- Grossfeld GD, Litwin MS, Wolf JS Jr, Hricak H, Shuler CL, Agerter DC, et al. Evaluation of asymptomatic microscopic hematuria in adults: the American Urological Association best practice policy—part II: patient evaluation, cytology, voided markers, imaging, cystoscopy, nephrology evaluation, and follow-up. *Urology* 2001;57:604-10.
- Ahmed Z, Lee J. Asymptomatic urinary abnormalities. Hematuria and proteinuria. *Med Clin North Am* 1997;81:641-52.
- Fassett RG, Horgan BA, Mathew TH. Detection of glomerular bleeding by phase-contrast microscopy. *Lancet* 1982;1:1432-4.
- Brendler, CB. Evaluation of the urologic patient: history, physical examination and urinalysis. In: Campbell MF, Walsh PC. *Campbell's Urology*. 7th ed. Philadelphia: Saunders, 1998:144-56.

Urinalysis

24. Sutton JM. Evaluation of hematuria in adults. *JAMA* 1990;263:2475-80.
25. Mohr DN, Offord KP, Owen RA, Melton LJ 3d. Asymptomatic microhematuria and urologic disease. A population-based study. *JAMA* 1986;256:224-9.
26. Khan MA, Shaw G, Paris AM. Is microscopic haematuria a urological emergency? *BJU Int* 2002;90:355-7.
27. Mohr DN, Offord KP, Melton LJ 3d. Isolated asymptomatic microhematuria: a cross-sectional analysis of test-positive and test-negative patients. *J Gen Intern Med* 1987;2:318-24.
28. Messing EM, Young TB, Hunt VB, Emoto SE, Wehbie JM. The significance of asymptomatic microhematuria in men 50 or more years old: findings of a home screening study using urinary dipsticks. *J Urol* 1987;137:919-22.
29. Khadra MH, Pickard RS, Charlton M, Powell PH, Neal DE. A prospective analysis of 1,930 patients with hematuria to evaluate current diagnostic practice. *J Urol* 2000;163:524-7.
30. Siegel AJ, Hennkens CH, Solomon HS, Van Boeckel B. Exercise-related hematuria. Findings in a group of marathon runners. *JAMA* 1979;241:391-2.
31. House AA, Cattran DC. Nephrology: 2. Evaluation of asymptomatic hematuria and proteinuria in adult primary care. *CMAJ* 2002;166:348-53.
32. Carroll MF, Temte JL. Proteinuria in adults: a diagnostic approach. *Am Fam Physician* 2000;62:1333-40.
33. Von Bonsdorff M, Koskenvuo K, Salmi HA, Pasternack A. Prevalence and causes of proteinuria in 20-year old Finnish men. *Scand J Urol Nephrol* 1981;15:285-90.
34. Springberg PD, Garrett LE Jr, Thompson AL Jr, Collins NF, Lordon RE, Robinson RR. Fixed and reproducible orthostatic proteinuria: results of a 20-year follow-up study. *Ann Intern Med* 1982;97:516-9.
35. Rytand DA, Spreiter S. Prognosis in postural (orthostatic) proteinuria: forty to fifty-year follow-up of six patients after diagnosis by Thomas Addis. *N Engl J Med* 1981;305:618-21.
36. Gallagher EJ, Schwartz E, Weinstein RS. Performance characteristics of urine dipsticks stored in open containers. *Am J Emerg Med* 1990;8:121-3.
37. Fogazzi GB, Garigali G. The clinical art and science of urine microscopy. *Curr Opin Nephrol Hypertens* 2003;12:625-32.
38. Graham JC, Galloway A. ACP best practice no. 167: the laboratory diagnosis of urinary tract infection. *J Clin Pathol* 2001;54:911-9.

Copyright of American Family Physician is the property of American Academy of Family Physicians and its content may not be copied or emailed to multiple sites or posted to a listserv without the copyright holder's express written permission. However, users may print, download, or email articles for individual use.