



Under the patronage of H.E. Fahmi bin Ali Al-Jowder
Minister of Works and Housing, Kingdom of Bahrain

Kingdom of Bahrain

December 5–7, 2005



intelligent building

Middle East 2005

International Exhibition & Conference for
Building Concepts, Materials and Technologies



**Invitation
to Exhibit**

Supported by

Organisers



Ministry of Works and Housing,
Ministry of Commerce,
Kingdom of Bahrain



Bahrain Chamber
of Commerce and Industry



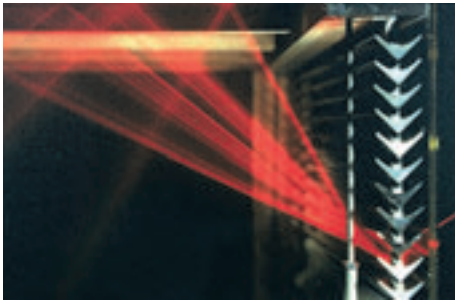
Bahrain Convention & Exhibition Bureau



Bahrain Society
of Engineers

NÜRNBERG GLOBAL FAIRS





Room for success

“ Use your chance: Generate new business at INTELLIGENT BUILDING MIDDLE EAST (IBME) 2005!

A lot of money is being invested in construction projects in the Middle East. Not only investors from the eastern Gulf countries are now putting their capital into real estate. Enterprises with clever building solutions to offer at IBME will meet a target group willing to invest. IBME makes its mark – use the opportunity to present your products and services in a premium setting at the intelligent building exhibition. So apply now and make sure of the best places!

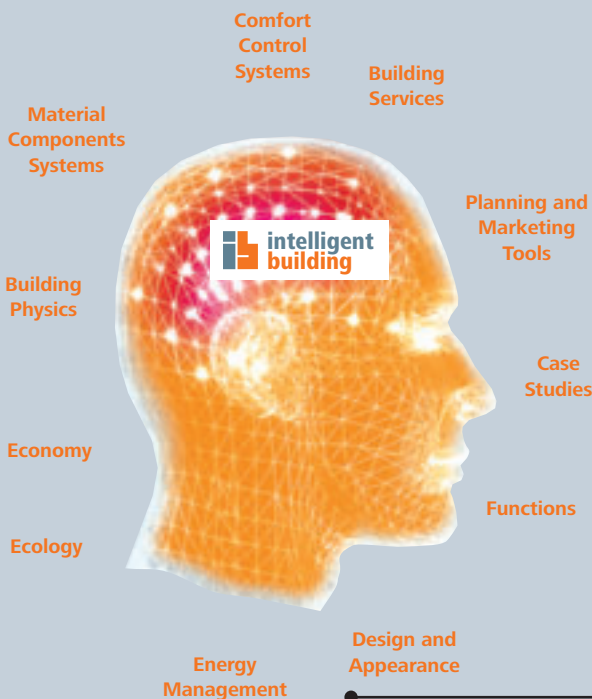
Like to know even more advantages?

Just call us, we look forward to hearing from you:

Tel +49 (0) 911. 86 06-86 97

Frank Venjakob

Be clever – present your products at IBME!



The business and expert event INTELLIGENT BUILDING MIDDLE EAST is based on the holistic concept of presenting building concepts, materials and technologies in order

- > **to maximise the comfort**, quality, value and performance of buildings
- > **to enable intelligent and cost-efficient planning**, construction, maintenance and renovation of commercial, industrial, residential and recreational buildings
- > **to optimise the facility management** during the life-span of the building
- > **to maximise the use of renewable energies** in particular in hot and humid climates
- > **to minimise the use of fossil energy**

The INTELLIGENT BUILDING MIDDLE EAST offers a comprehensive world of solutions for planners, manufacturers, property owners, users and investors in hot and humid climate conditions.

THE TRADE SHOW

is a market of cost-effective materials, components and products to improve quality, performance and comfort of buildings



THE CONFERENCE

with international top speakers will present latest research results and innovative solutions for buildings in hot and humid climates



SPECIAL EXHIBITION

+

PROJECT SHOW CASE

Cutting-edge materials, products and technologies*



Innovative and up-coming building projects of the Gulf region*



*selected and approved by an objective Technical Committee of international experts

Exhibiting at INTELLIGENT BUILDING MIDDLE EAST offers suppliers and manufacturers of building materials and technologies access to a vast, quickly growing market where ambitious building projects are under way or in planning. Furthermore, diminishing fossil energy resources mean that developers, planners and investors are increasingly interested in intelligent and sustainable building concepts leading to cost and energy efficiency throughout the lifetime of the building projects.

INTELLIGENT BUILDING MIDDLE EAST – IBME

Three days of
business, trade,
contacts and know-
how exchange in
a booming region!

The intelligent exhibition
concept attracts high-calibre
visitors to your stand –
visitors who are willing to invest
and value quality.



Bull's-eye: The target group of IBME

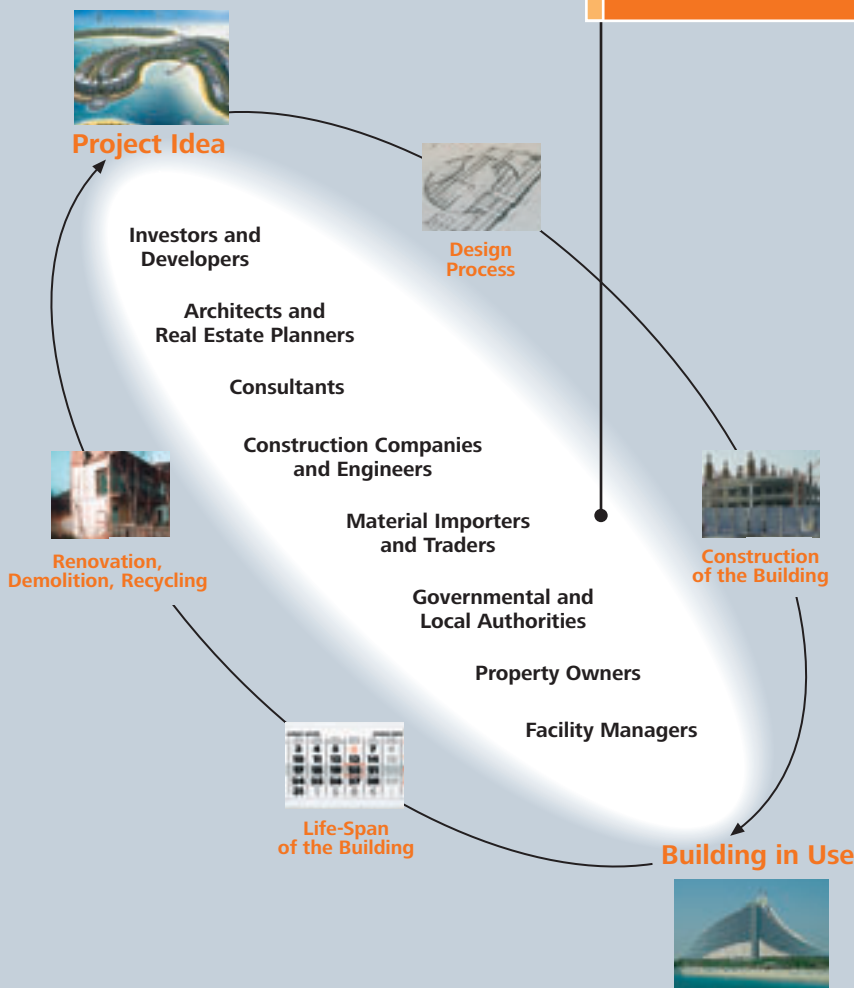
INTELLIGENT BUILDING - A World Of Smart Solutions!

The INTELLIGENT BUILDING MIDDLE EAST is a must-attend event for all investors, developers, project managers, architects and planners, construction and trade companies, executives and decision-makers involved in the planning, construction, marketing and maintenance of public and commercial real estate.



Visitors come from

- GCC countries
- Middle East
- Western Asian countries
- and other hot and humid climate zones.



“ The right setting for doing good business:

Visitors at INTELLIGENT BUILDING MIDDLE EAST have very clear and pragmatic expectations. They want solutions that improve the comfort of buildings.

The focus of the exhibition is your advantage as exhibitor: The visitors are looking specifically for sophisticated solutions. Come to the exhibition, it's worth it!

”

Bahrain, the Gulf countries and the Arabic economic region

The Kingdom of Bahrain is an archipelago of 33 islands in a bay between Qatar and Saudi Arabia, connected by a 27 km long causeway to Eastern Saudi Arabia. The prime target markets that can easily be reached from Bahrain due to cultural and traditional links and its geographic location are the Gulf countries, the Arabic economic region and Central and Western Asia.

The Middle East: Where capital is invested



Bahrain and the MENA countries are right in the centre of the world's financial capitals. There is an unlimited business potential, as the Middle East has become one of the prime contenders in the world economic market.

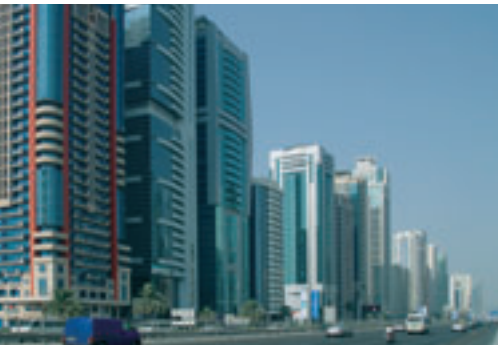
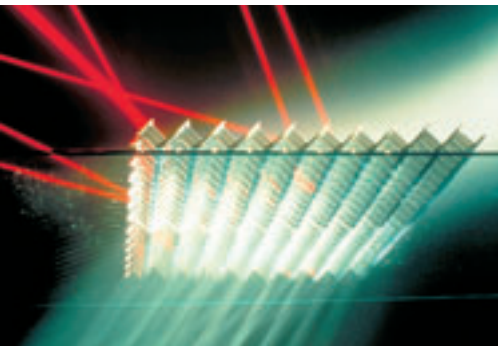
The Middle East sets more and more benchmarks in architecture!

The Middle East and in particular the States of the Gulf Cooperation Council (GCC), Saudi-Arabia, United Arab Emirates, Kuwait, Oman, Qatar and Bahrain are increasingly in the spotlight with their ambitious building and infrastructure projects. GDP growth rates of 3-4 % per annum offer an excellent basis for investment in commercial, tourist and residential areas. The special climate conditions in the Middle East together with diminishing resources of fossil energy demand new materials, solutions and technologies to achieve high added values for buildings throughout their life-cycle.

Bahrain – Gateway to business in the Middle East

The Kingdom of Bahrain with its strategic location within the Middle East offers excellent access from throughout the region whether by direct road from Saudi Arabia or by a number of daily flights to its international airport. Bahrain with its liberal and cosmopolitan life-style is an attractive and safe destination for conference delegates and trade visitors and offers excellent trade show and conference facilities, a modern business infrastructure and a variety of first-class hotels, shopping centres and tourist attractions.





Conference

Learning from the building technology experts!

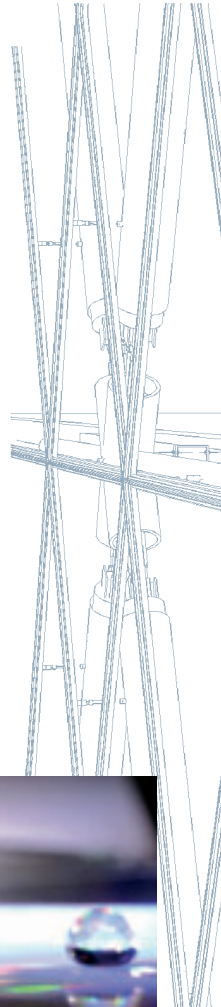
The conference program will consider in particular hot and humid climate conditions and the specific needs for sustainable and innovative solutions for buildings.

An International Advisory Committee will select topics and international speakers to share their latest research results, product development and case studies with the conference delegates on a world-wide level.

Planned topics in parallel sessions will cover state-of-the-art solutions for:

- intelligent use of energy and other resources
- intelligent materials and components
- intelligent facade systems
- intelligent cooling, ventilation and building services
- intelligent design and advanced simulation tools

The conference is organised by the Bahrain Society of Engineers in co-operation with an International Advisory Committee.



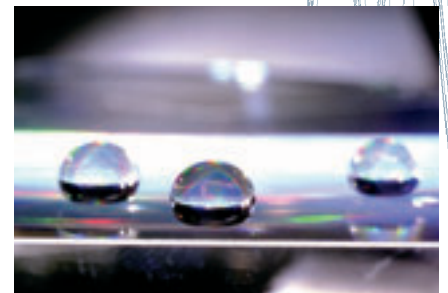
Members of the International Advisory Committee

(as of October 26, 2004)

| | | |
|-------------------------------------|---|------------------------|
| Prof. D. Michelle Addington | Harvard Graduate School of Design | Cambridge, USA |
| Prof. Federico Butera | Politecnico di Milano (POLIMI) | Milan, Italy |
| Prof. Leon R. Glicksman | Massachusetts Institute of Technology | Cambridge, USA |
| Prof. Dr. Gerhard Hausladen | Technical University Munich | Munich, Germany |
| Prof. Dr. (Univ. Rom) Thomas Herzog | Technical University Munich | Munich, Germany |
| Dr. Helmut Hohenstein | Consultant for Specific Topics in Building | Flintsbach, Germany |
| Prof. Phil Jones | Welsh School of Architecture | Cardiff, Great Britain |
| Prof. Arvind Krishan | School of Planning and Architecture | New Delhi, India |
| Dr.-Ing. Werner Lang | Architect, Consultant on Intelligent Building Design | Munich, Germany |
| Dr. Wolfgang Palz | World Council for Renewable Energies | Brussels, Belgium |
| Bipin Shaw | Program Director of the National Fenestration Council | Silver Spring, USA |
| Dr. Steve Szokolay | University of Queensland | Brisbane, Australia |
| Prof. Wilfried Wang | University of Texas in Austin | Austin, USA |
| Dr. Volker Wittwer | Fraunhofer Institute for Solar Energy Systems (ISE) | Freiburg, Germany |
| Prof. Arthouros Zervos | European Renewable Energy Council | Brussels, Belgium |

Representatives for the MENA countries and other regions are invited and will be announced shortly:

www.intelligent-building-middle-east.com



**Share Knowledge! – Meet the Experts! –
Look into the Future of Buildings!**

Future World of Intelligent Building

Special Exhibition

The Special Exhibition centrally located on the trade show floor will focus on highly innovative materials, products and technologies. The advantage of these exhibits is maximisation of comfort and performance of buildings in the future. Products with high architectural and design qualities and components are also invited for presentation.



Project Show Case

The Project Show Case is a presentation of recent and upcoming examples of innovative buildings and real estate projects in the Middle East region. Planners, architects, developers and investors will provide in-depth knowledge about their specific needs and planning parameters. The projects allow intensive study of the best practice for high-comfort and low-energy building.

The high standard is guaranteed by careful selection of the projects by the Technical Committee.



“ The accompanying events are timed to enable visitors to spend lots of time on your stand! ”

Comparison of market data

| Country | Population | Growth rate | Gross National Income (USD) | GNI growth rate |
|----------------------|--------------------|-------------|-----------------------------|-----------------|
| Bahrain | 660,000 | 2.0 % | 7.3 billion | 3.5 % |
| Saudi Arabia | 21,900,000 | 2.8 % | 186.8 billion | 1.0 % |
| Qatar | 610,000 | 2.0 % | 17.5 billion | 2.0 % |
| United Arab Emirates | 3,200,000 | 6.9 % | 49.2 billion | 2.0 % |
| Oman | 2,500,000 | 2.4 % | 19.9 billion | 0.0 % |
| Yemen | 18,600,000 | 3.0 % | 10.0 billion | 3.6 % |
| Kuwait | 2,300,000 | 2.3 % | 38.0 billion | - 1.0 % |
| Iraq | 24,200,000 | 2.1 % | 14.8 billion | no data |
| Iran | 65,500,000 | 1.6 % | 112.9 billion | 6.7 % |
| Jordan | 5,200,000 | 2.7 % | 9.1 billion | 4.9 % |
| Syria | 17,000,000 | 2.4 % | 19.1 billion | 2.4 % |
| Pakistan | 145,000,000 | 2.4 % | 60.9 billion | 2.8 % |
| Total | 306,670,000 | | 545.5 billion | |
| Germany | 82,500,000 | 0.2 % | 1,900.0 billion | 0.2 % |
| India | 1,000,000,000 | 1.6 % | 495.0 billion | 4.6 % |

Source: World Development Indicators Database, The World Bank Group, August 2003

List of Exhibits

- 1 Building materials, components and systems**
 - 1.1 Processed glass**

laminated, toughened, insulating, security, self-cleaning glass
 - 1.2 Window and door systems**

including: profiles, fittings and supplementary hardware
 - 1.3 Facade systems**

glass and metal facades, wall claddings and membrane systems, interactive facades, etc.
 - 1.4 Roof systems**

such as glass roofs, reflective roof coatings, shading solutions, membrane roofs
 - 1.5 Interior work**

high-performance wall and ceiling systems

- 2 Comfort control systems: energy, light and ventilation**
 - 2.1 Sun protection systems**

shading devices, high reflective coatings, high reflective structures, etc.
 - 2.2 Day-lighting systems**

efficient use of daylight and visual comfort
 - 2.3 Passive cooling solutions**

evaporative cooling, night-time cooling, natural ventilation
 - 2.4 Ventilation systems**

facade integrated ventilation, filtering systems
 - 2.5 Electric lighting**

components and integrated solutions
 - 2.6 Control and sensor systems for windows and doors**

access control, daylight control, energy control, etc.

- 3 Building services, HVAC systems and sustainability**
 - 3.1 Cooling systems**

centralised cooling systems, recuperative cooling recovery systems, district cooling, solar cooling, etc.
 - 3.2 Thermal storage systems**

thermal, sorption and chemical storage, seasonal storage
 - 3.3 Energy providing systems**

thermal and electrical energy providing systems, photovoltaic cells, combined systems for use of solar energy
 - 3.4 Building control systems**

security, access, surveillance systems, communication, monitoring
 - 3.5 Maintenance systems**

facility management, quality control, value engineering, life-cycle analysis

- 4 Planning and marketing tools**
 - 4.1 Integrated simulation tools**

hardware and software components and tools
 - 4.2 Innovative marketing**

hardware and software for realistic rendering of buildings and functions
 - 4.3 Virtual reality**

simulation of building processes and real environments
 - 4.4 Instruments for advanced value engineering**

IT solutions for networking and communication, life-cycle analysis

- 5 Manufacturing equipment, machinery, software and know-how**
 - 5.1 Suppliers of machinery and software**
 - 5.2 Developers of software and know-how**
 - 5.3 Universities, research institutes, testing and certification bodies**

- 6 Investors, developers, consultants, engineers, architects and planners**

Trade Show Participation

Option A:

space only (min. 30 m²) 320 USD per m²

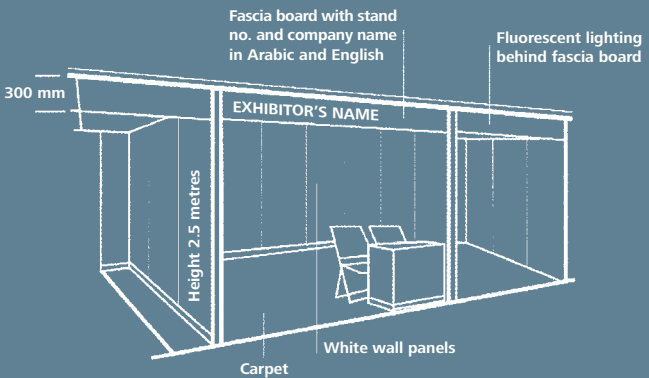
Option B:

space and walk-on package

(min. 9 m²) 360 USD per m²

(incl. space fee, wall panels, carpet, fascia board, reception counter with chair, table with three chairs, two fluorescent lights, one 220 V power outlet, waste basket)

Standard exhibition stand
with shell scheme



Surcharges

- corner location: + 5 % on space only fee
- peninsula location: + 10 % on space only fee (min. 18 m²)
- island location: + 15 % on space only fee (min. 36 m²)

Co-exhibitors: 90 USD

(incl. full event directory listing, internet listing and newsletters)

Stand allocation: on first-come, first-served basis

Special Exhibition/Project Show Case

Participation is primarily for companies that have booked a stand at the trade show. Special admission process by the Technical Committee.

Basic fee 3,000 USD incl. 3 m²
additional m² 360 USD per m²

intelligent building

Middle East 2005

International Exhibition & Conference for
Building Concepts, Materials and Technologies



At a Glance

Opening Hours

December 5-7, 2005 (Mon.-Wed.)
10.00 – 18.00 hr

Conference Hours

Plenary Session
Conference Sessions

December 5, 2005 (afternoon)
December 6-7, 2005
8.30 – 14.30 hr

Venue

Bahrain International Exhibition Centre
Manama, Kingdom of Bahrain

Frequency

annual

Information/Application

**GCC countries, Middle East,
North African Arab Countries:**



Bahrain Convention & Exhibition Bureau
P.O. Box 11644
Manama, Kingdom of Bahrain
Tel +973.17 55 88 12
Fax +973.17 55 34 47
info@bahrainexhibitions.com

Europe, Americas, Africa, Asia:

NÜRNBERG GLOBAL FAIRS

Nürnberg Global Fairs GmbH
Messezentrum
90471 Nürnberg
Germany
Tel +49 (0) 911. 86 06-86 97
Fax +49 (0) 911. 86 06-86 94
ibme@nuernbergglobalfairs.com

www.intelligent-building-middle-east.com