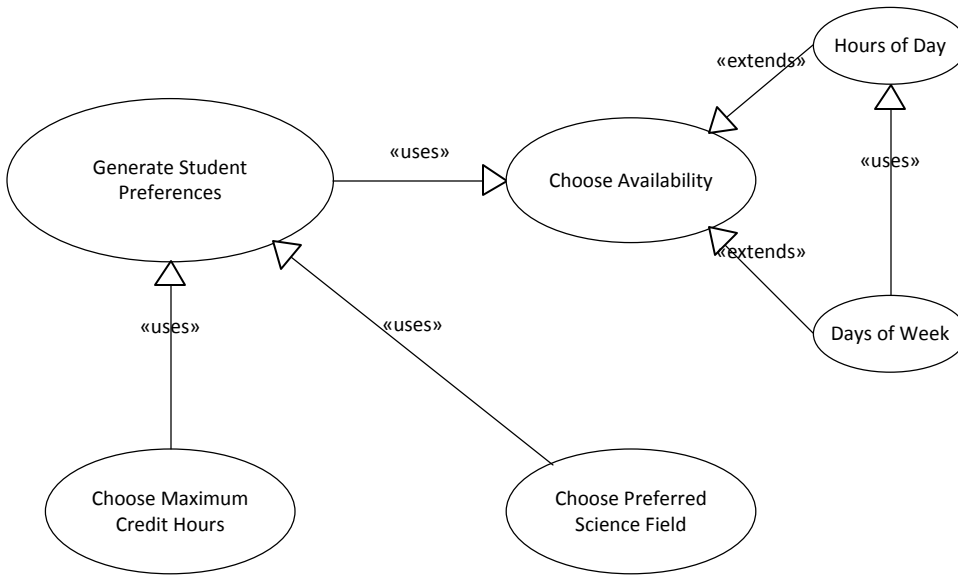


Use Case Sub Diagram for Case
"Generate Student Preferences"
MyIPFWAdvisor CS460



Idea here is that a user could simply choose either the hours of the day he is available on any given day or the days of the week he is available in any given week. In the latter case, he could select the hours of day he is available each of the days; this would be essentially the same task as the former, and could probably be the same code later on.