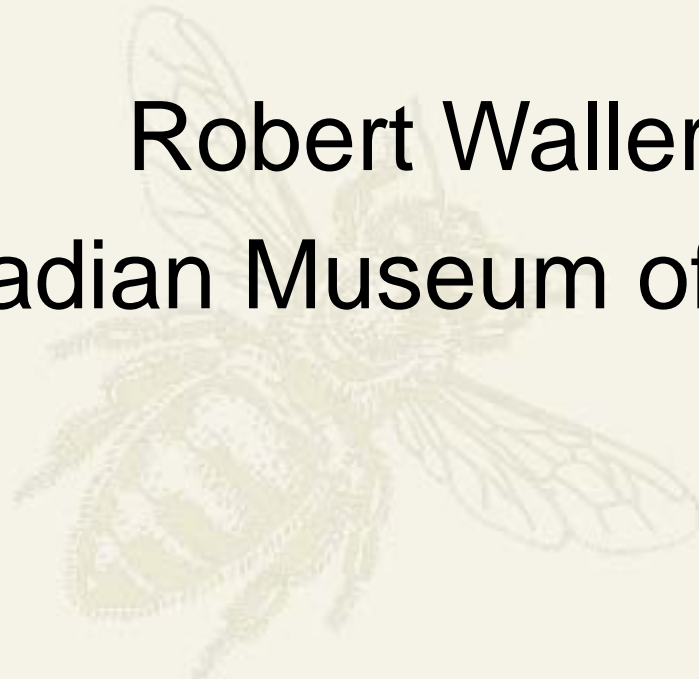


# A Risk Model for Collection Preservation

Robert Waller

Canadian Museum of Nature





# I am going to:

- ◆ answer a three year old question
- ◆ describe the risk model:
  - ◆ higher level structure
  - ◆ lower level structures
- ◆ tell you a story about:
  - ◆ a really big RH excursion
  - ◆ raising the walls

# I am going to:

- ◆ **answer a three year old question**
- ◆ describe the risk model:
  - ◆ higher level structure
  - ◆ lower level structures
- ◆ tell you a story about:
  - ◆ a really big RH excursion
  - ◆ raising the walls

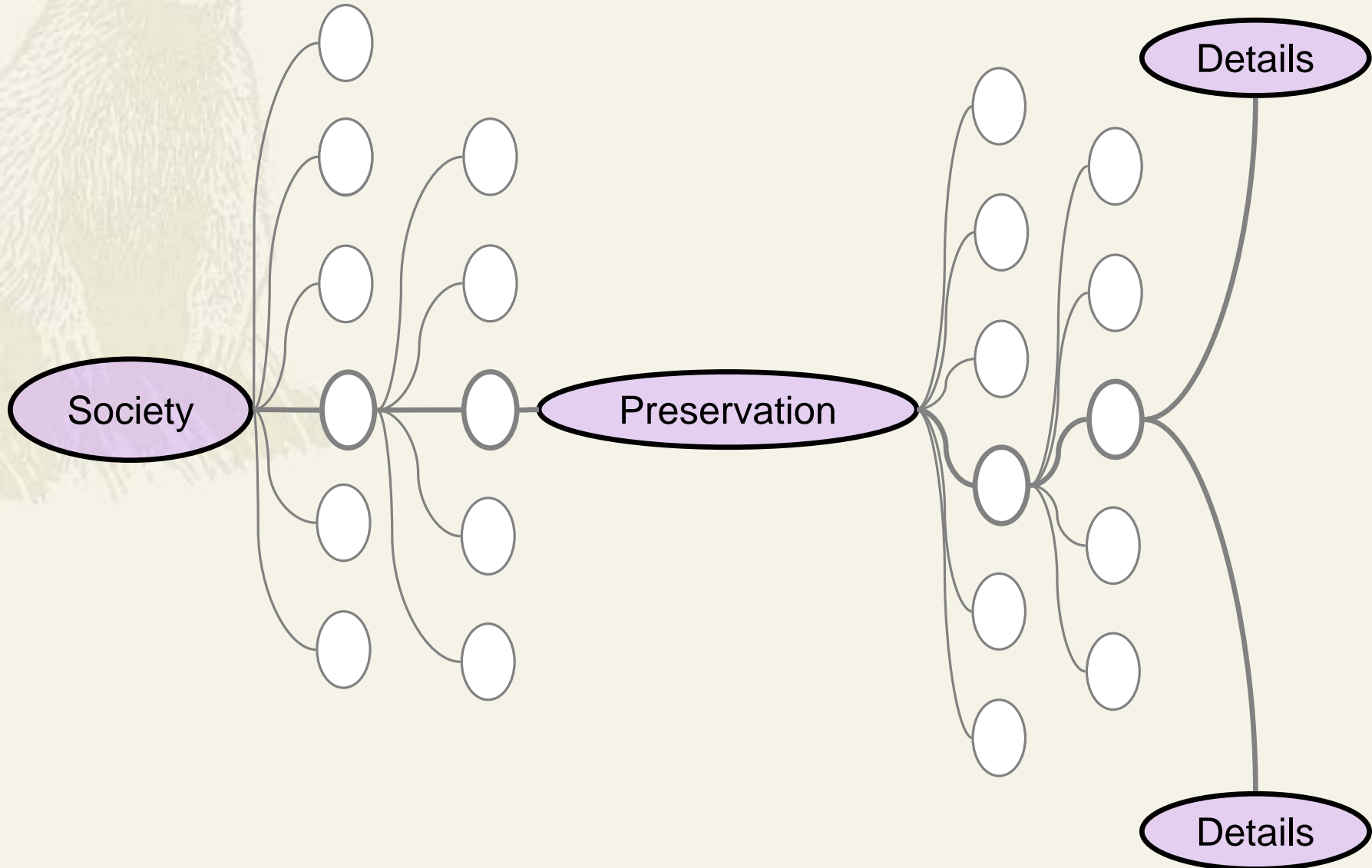
If one is not deciding  
preventive conservation  
priorities in a rational  
way then what is one  
doing?

- ◆ Modes of consciousness
- ◆ Heuristic approach
- ◆ Heuristic – Systematic Information Processing Theory



# I am going to:

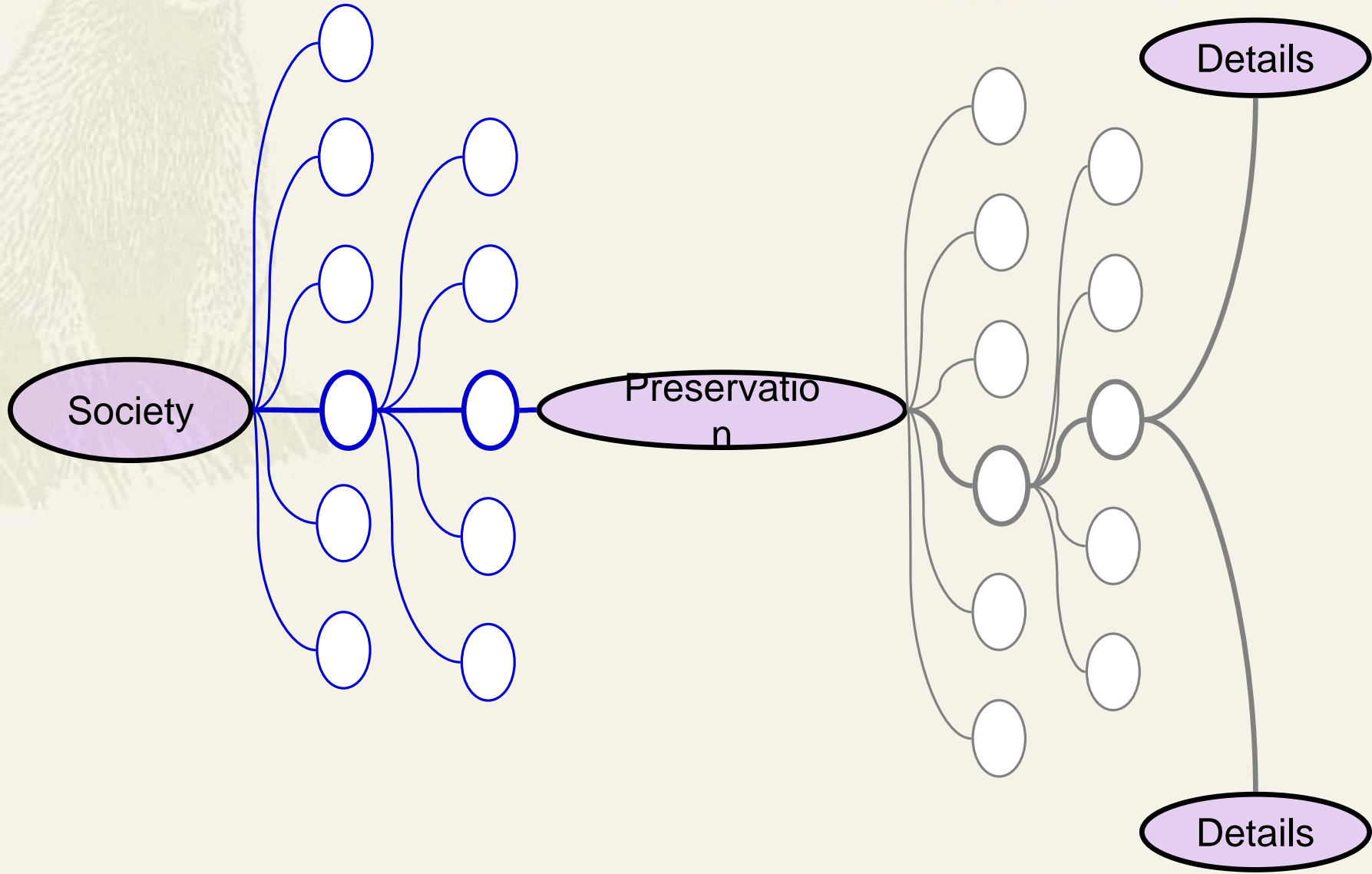
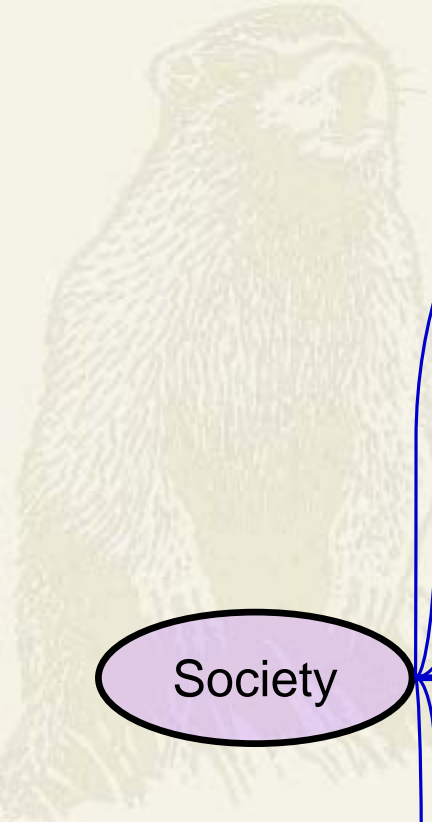
- ◆ answer a three year old question
- ◆ **describe the risk model:**
  - ◆ higher level structure
  - ◆ lower level structures
- ◆ tell you a story about:
  - ◆ a really big RH excursion
  - ◆ raising the walls

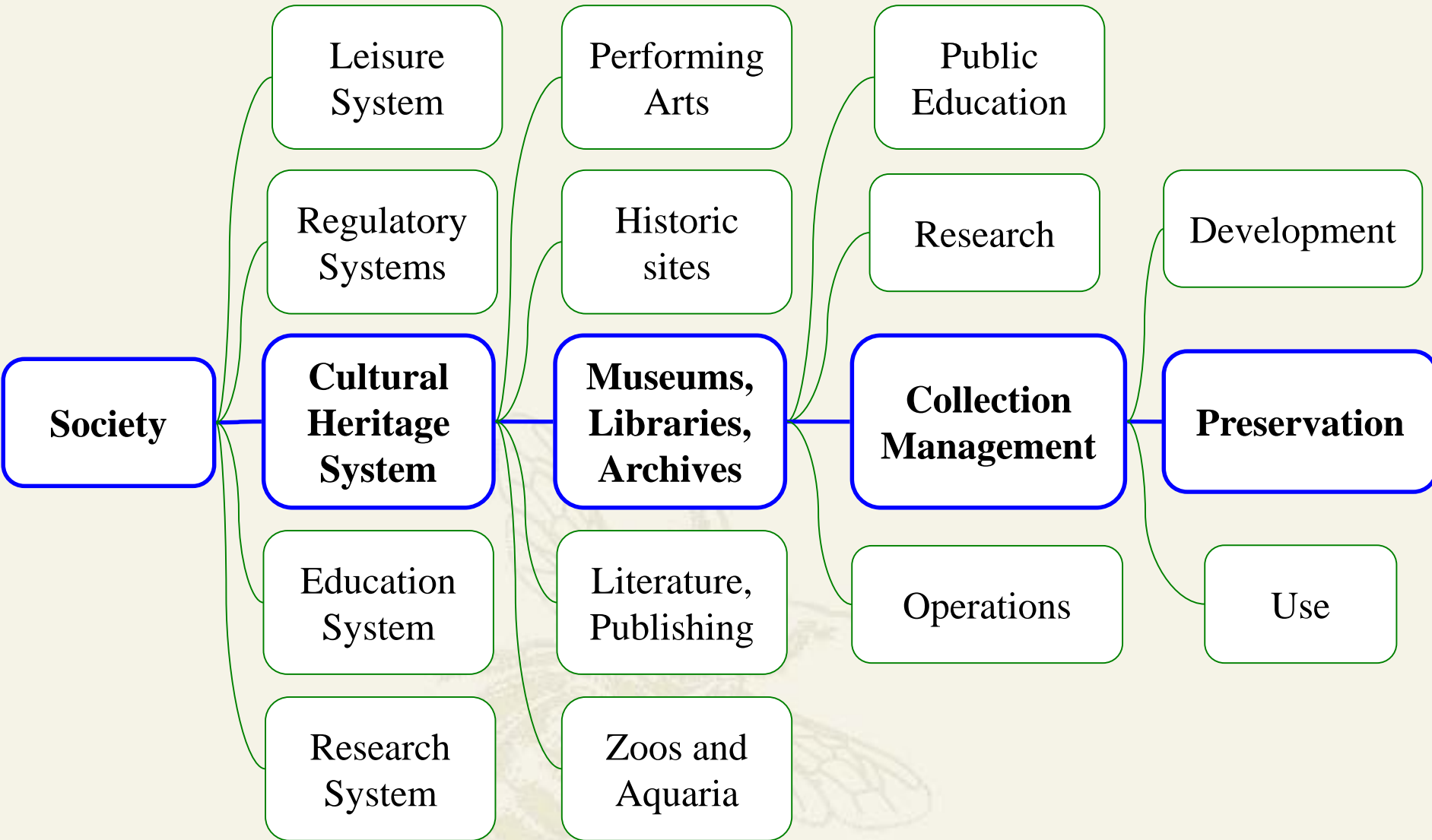


# I am going to:

- ◆ answer a three year old question
- ◆ **describe the risk model:**
  - ◆ **higher level structure**
  - ◆ lower level structures
- ◆ tell you a story about:
  - ◆ a really big RH excursion
  - ◆ raising the walls

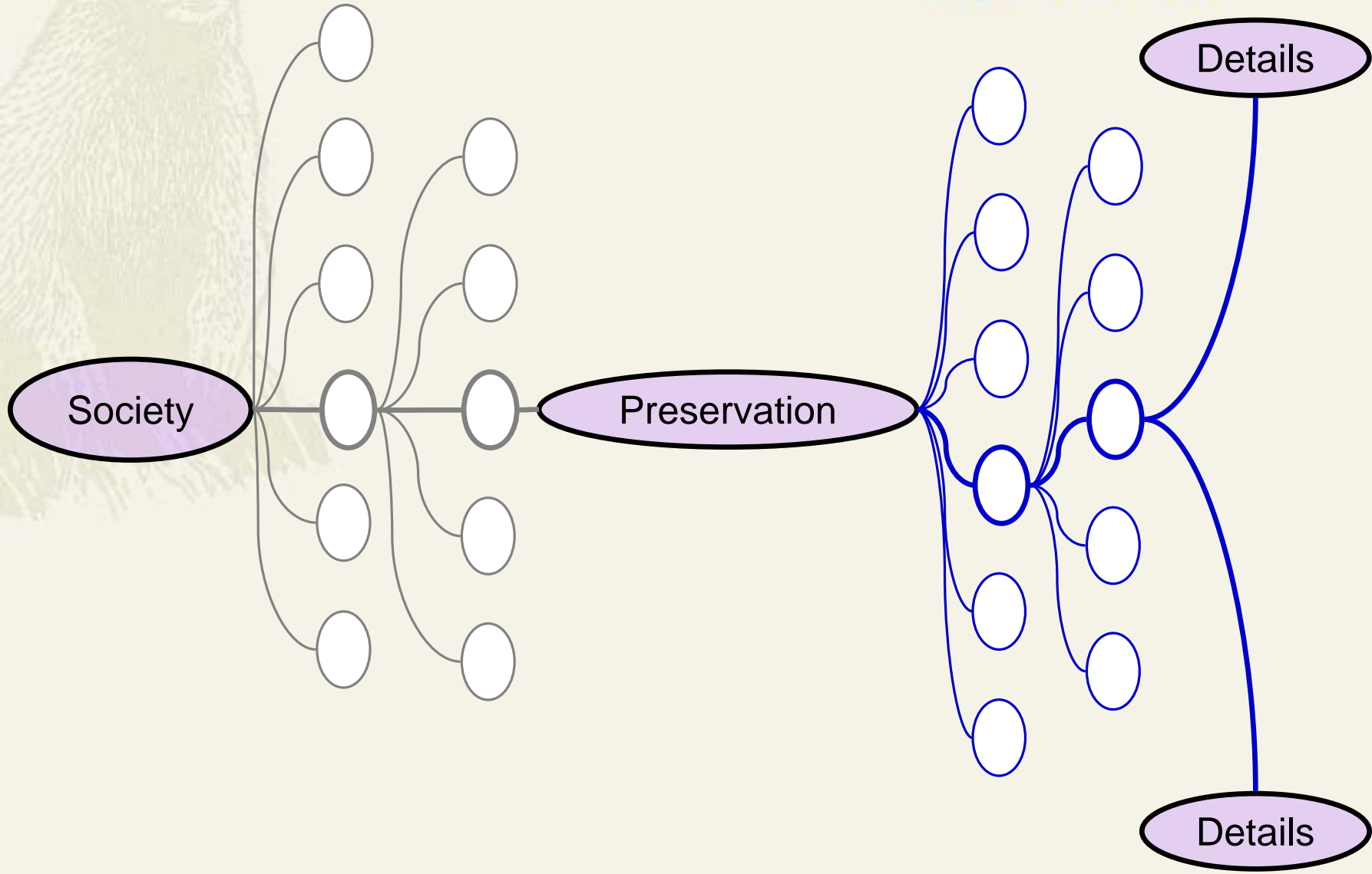
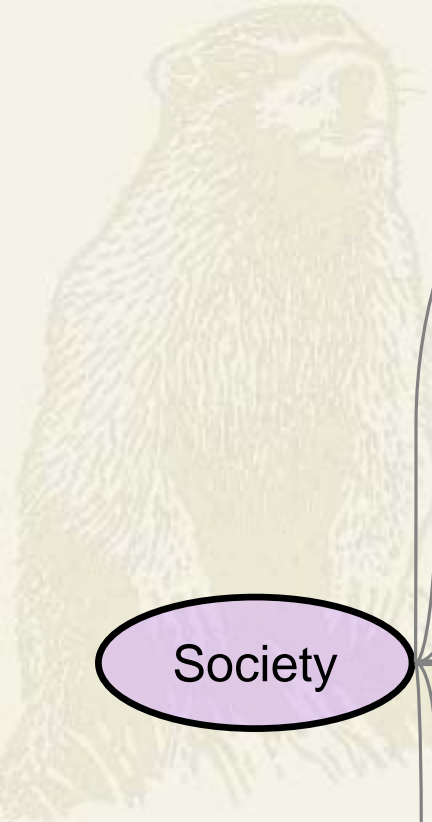


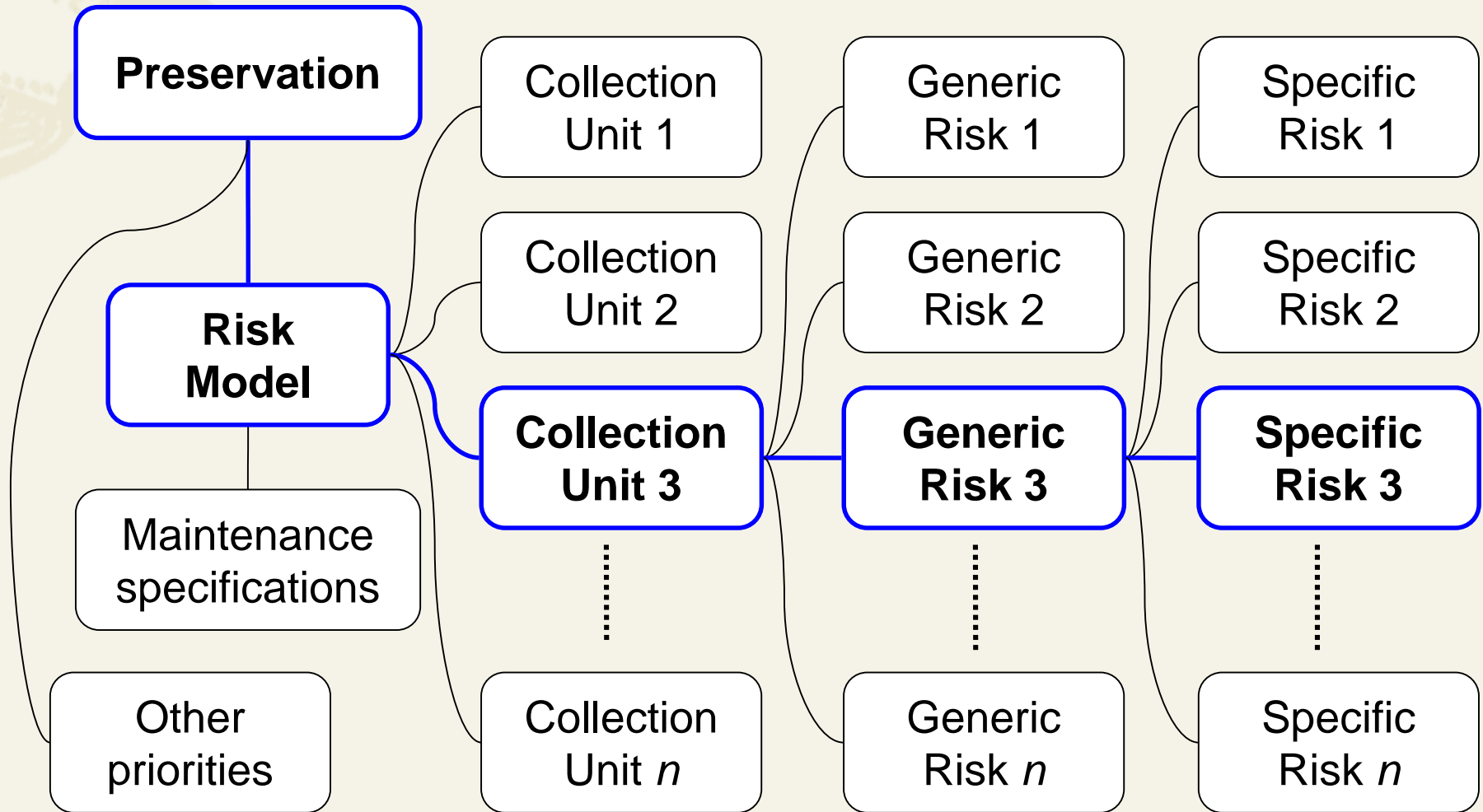




# I am going to:

- ◆ answer a three year old question
- ◆ **describe the risk model:**
  - ◆ higher level structure
  - ◆ **lower level structures**
- ◆ tell you a story about:
  - ◆ a really big RH excursion
  - ◆ raising the walls







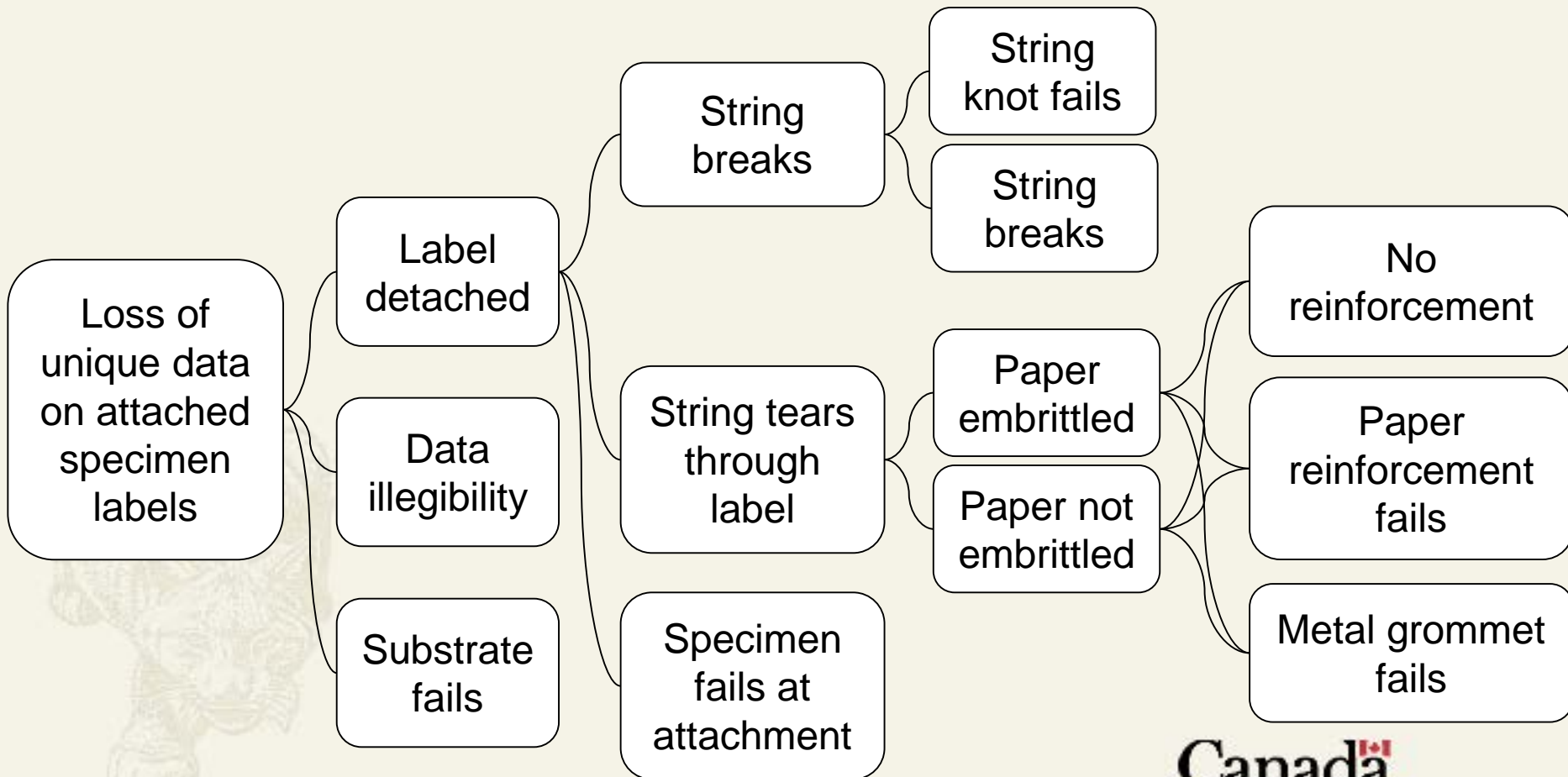
Specific Risk

Mode of Failure

Event, Process or State

Causative or Precursor Event, Process or State

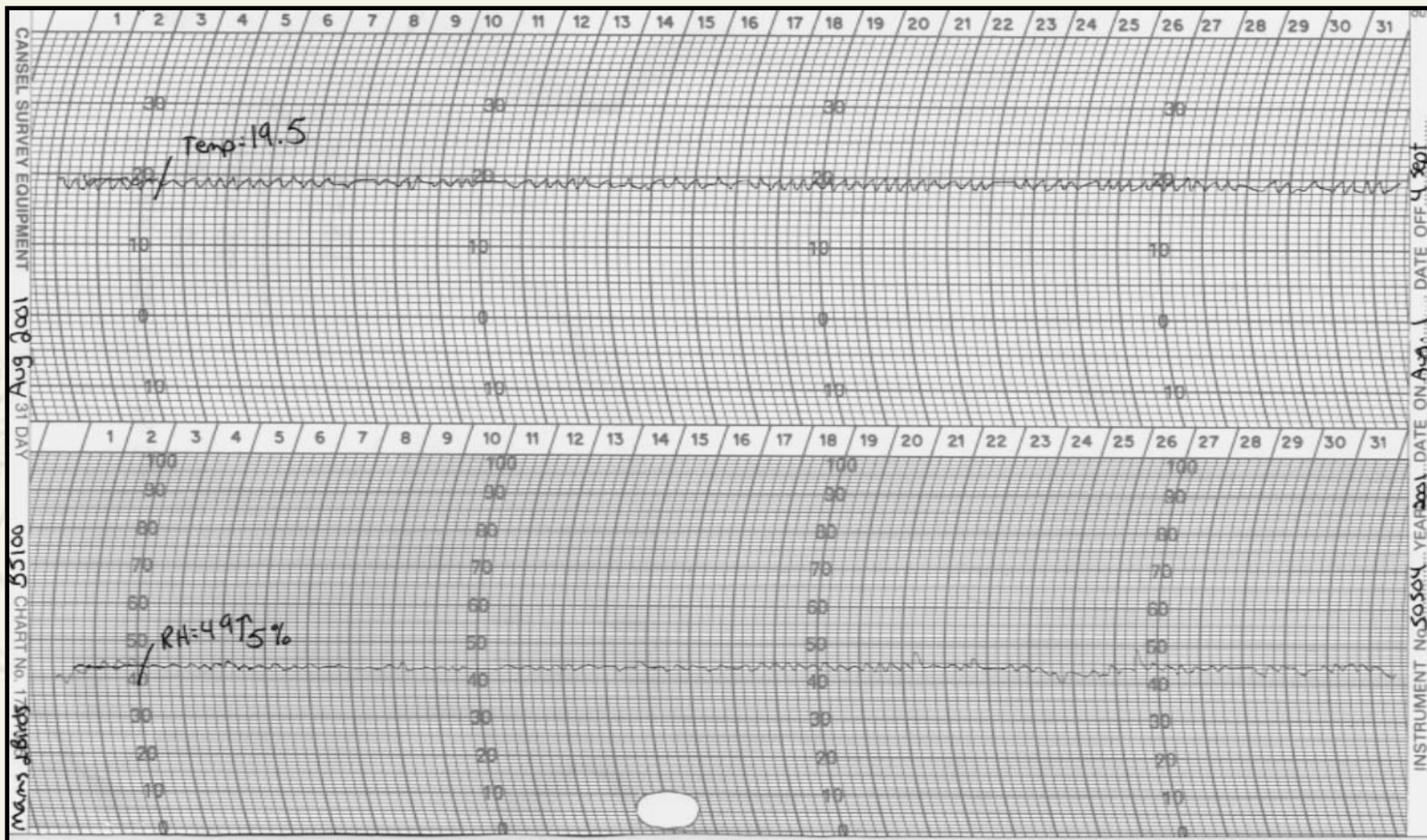
Causative or Precursor Event, Process or State

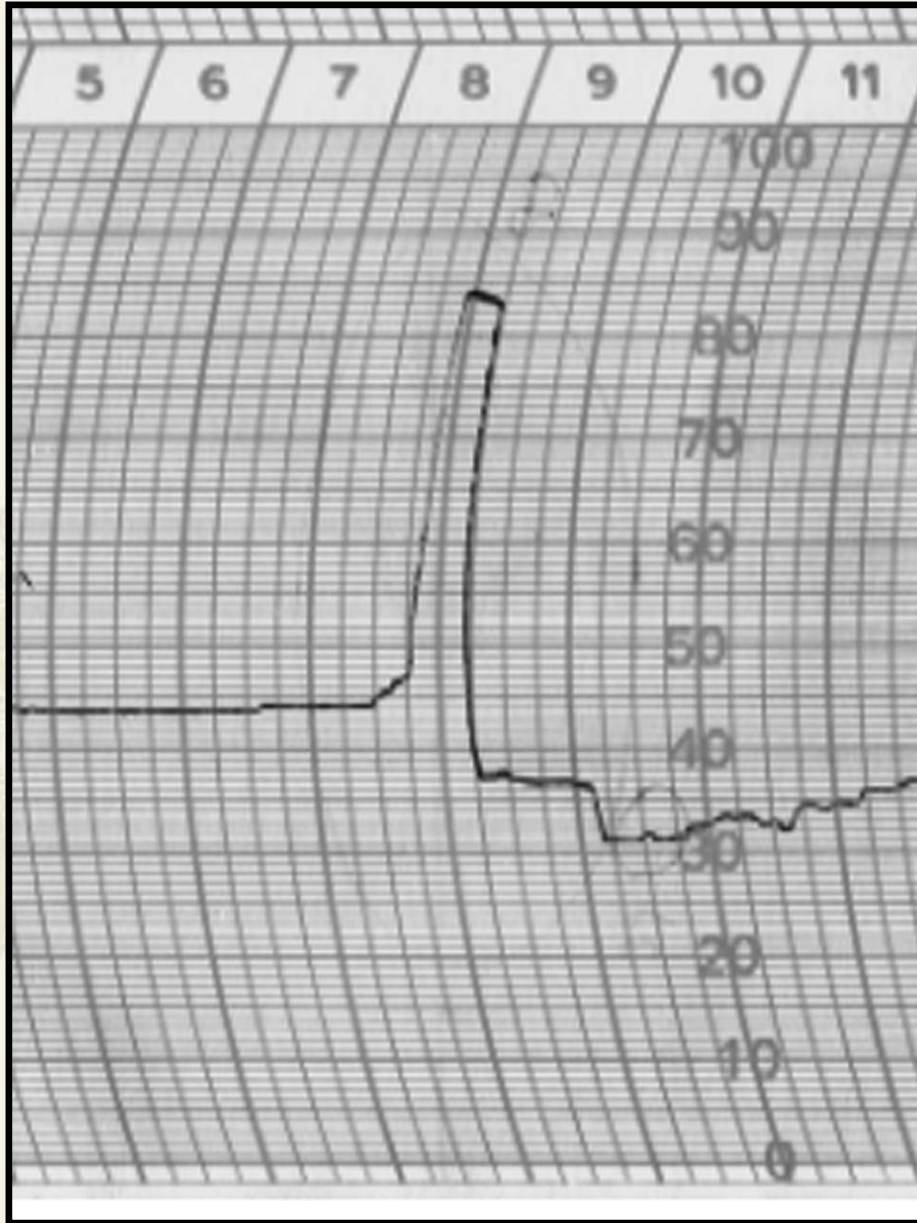


# I am going to:

- ◆ answer a three year old question
- ◆ describe the risk model:
  - ◆ higher level structure
  - ◆ lower level structures
- ◆ **tell you a story about:**
  - ◆ **a really big RH excursion**
  - ◆ raising the walls



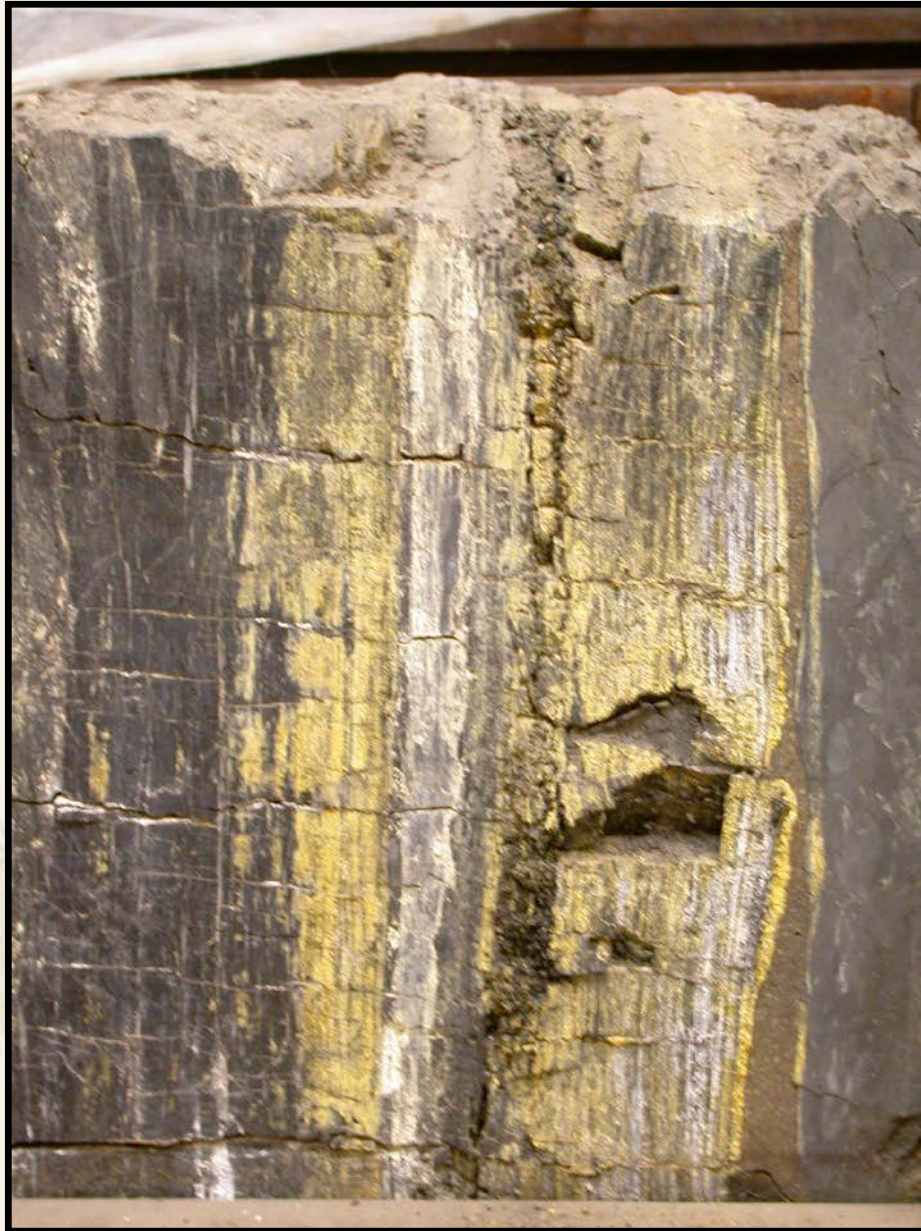


















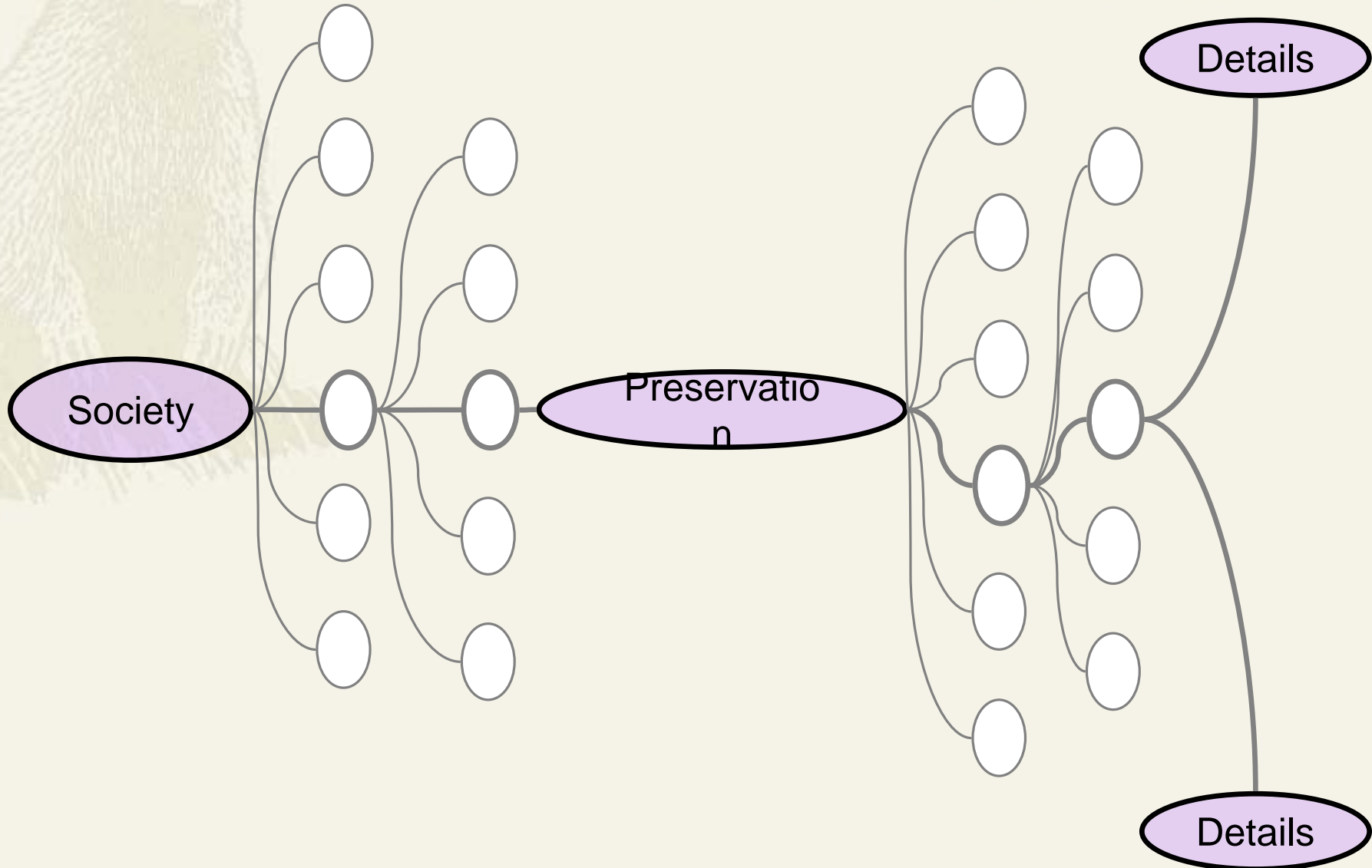
# I am going to:

- ◆ answer a three year old question
- ◆ describe the risk model:
  - ◆ higher level structure
  - ◆ lower level structures
- ◆ **tell you a story about:**
  - ◆ a really big RH excursion
  - ◆ **raising the walls**









# Acknowledgements

◆ Laura Smyk

