

Introduction to Cambridge Secondary 1

An online training course for teachers

Introduction to Cambridge Secondary 1 is a self-managed online training course for teachers new to teaching the programme. Access to the course is free of charge for Cambridge schools.

Course outline

The course provides an overview of Cambridge Secondary 1. It guides teachers through the materials provided and helps you to become familiar with the Cambridge Secondary 1 website.

This course includes:

- Full audio commentary.
- Downloadable support documents.
- Suggestions for questions to discuss with your colleagues.

The course provides an orientation to Cambridge Secondary 1 and helps you to reflect on the way that you currently plan and implement your courses.

Course content

- Introduction to the Cambridge approach to teaching and learning.
- How to understand and use the Curriculum Frameworks and Teacher Guides.
- **Assessment**
 - Using Cambridge Progression Tests and the Cambridge Progress Checker.
 - Cambridge Secondary 1 Checkpoint.
- Support and further training.

At the end of the course you will receive a Certificate of Completion.

How to join the course

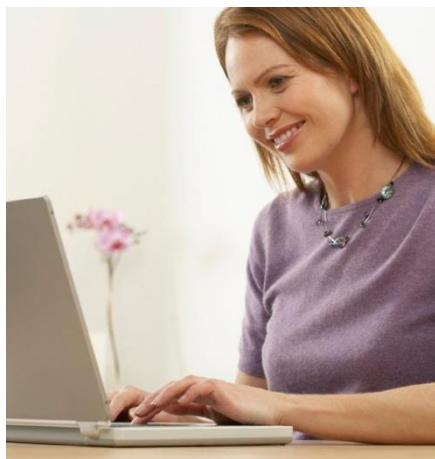
You are not required to register in advance for this free course. Full instructions for accessing the course are attached to this document.

When you access the course for the first time you will be asked for a course enrolment key code.

You should use the key code:

45aW9H





Technical requirements

The following minimum computer specification is recommended:

- a computer with internet access
- an up-to-date internet browser with cookies enabled (the courses will not work without cookies enabled)
- preferably Java installed on the computer
- sound card and headphone or speakers
- Adobe Reader and Adobe Flash.

If you have any technical questions about the course, please contact us at info@cie.org.uk

Accessing the online course

Step 1 – Set up your account on our online training site

- If you are a new user of our online training site, go to the Professional Development Learning Community website: <http://learning.cie.org.uk/professionaldevelopment/>. If you are an existing user go to Step 2.
- Go to the 'Login' box on the left of the screen and click on 'Create new account'.
- Fill in all the details, choosing your own username and password.
- Click on 'Create my new account'.
- Check your email. You should receive an email asking you to verify your account. Click on the link in the email to confirm your account.

Step 2 – Enrol on your course

- Click on 'Cambridge Primary & Cambridge Secondary 1' in the course catalogue on the homepage.
- Click on the link 'Introduction to Cambridge Secondary 1'.
- You will be required to enter the course enrolment key code provided overleaf.

When you have enrolled on your course it is a good idea to bookmark the page. Please send any further enquiries via the 'Help' section on our website at www.cie.org.uk/help

Important information

Please add the email address info@cie.org.uk to your safe sender list to ensure that you receive any emails relating to the course.



Learn more! For more information on Cambridge Secondary 1 please visit www.cie.org.uk/cambridgesecundary1 or contact Customer Services on +44 1223 553554 or email info@cie.org.uk