

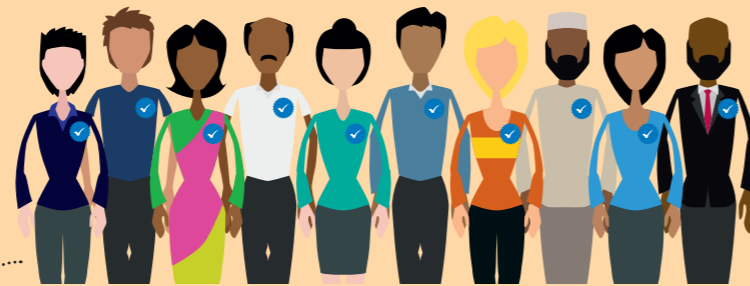
# How we mark and grade papers

Cambridge International Examinations receives over eight million answer scripts a year from all over the world. Every script needs the correct mark so that everybody gets the correct grade. This is how it happens...

## Start here...



Students put down their pens. The exam is over, and the scripts are packaged up and sent back to Cambridge



Cambridge examiners are teachers or experts in their subject

Then the scripts are passed to our teams of examiners. Every examiner practises by marking the same scripts as the senior team to make sure they understand how to mark to the same standard

Most scripts are scanned, ready to be marked on a computer screen by examiners. For any exam, every student's work is marked in the same way



10  
28  
8  
7  
23

Some scripts are marked on paper and some, such as multiple choice exams, are marked automatically by a computer

A few days after the exam, a team of our experienced senior examiners get together to mark a sample set of scripts



Our examiners are now ready to start marking. Senior examiners check the marking of every examiner to make sure that they keep marking correctly



If one examiner is not able to mark consistently, they are asked to stop. Another examiner then re-marks their scripts

So now we have marks for every script. How do we work out the grades?

We turn marks into grades by using grade boundaries. Grade boundaries are the minimum marks that students need to achieve a grade

We use a mixture of statistical evidence and expert judgment to agree grade boundaries. They vary slightly from year to year



Once the grade boundaries have been agreed, we apply them to your marks to give you a grade

Senior examiners carry out final checks on the marking. Once we've done all of our checks, your results are sent back to your school



Watch the video [here](#)